

PowerJet

PRESSURE CLEANING SYSTEMS

OPTIONS & ACCESSORIES CATALOG



Made In
North America

CRN Boiler Approved
Coils Available

More than just a name... **IT'S THE POWER YOU NEED**

www.powerjetpressure.com

1-877-765-9211

sales@powerjetpressure.com

EXAMPLE: To help you size your Nozzle

- Pressure washer is 4000 PSI @ 3.5 GPM
- Tip size is 3.5

#1. START WITH YOUR MACHINE'S PSI UP HERE

POUNDS PER SQUARE INCH (PSI)

STANDARD NOZZLE SIZE	HOLE SIZE	POUNDS PER SQUARE INCH (PSI)																
		500	750	1000	1250	1500	1750	2000	2250	2500	2750	3000	3250	3500	3750	4000	4500	5000
2.0	.034"/0.86mm	0.71	0.87	1.00	1.12	1.22	1.32	1.41	1.50	1.58	1.66	1.73	1.80	1.87	1.94	2.00	2.12	2.24
2.5	.042"/1.07mm	0.88	1.08	1.25	1.40	1.53	1.65	1.77	1.88	1.98	2.07	2.17	2.25	2.34	2.42	2.50	2.65	2.80
3.0	.043"/1.09mm	1.06	1.30	1.50	1.68	1.84	1.98	2.12	2.25	2.37	2.49	2.60	2.70	2.81	2.90	3.00	3.18	3.35
3.5	.048"/1.22mm	1.24	1.52	1.75	1.96	2.14	2.32	2.47	2.63	2.77	2.90	3.03	3.15	3.27	3.39	3.50	3.71	3.91
4.0	.052"/1.32mm	1.41	1.73	2.00	2.24	2.45	2.65	2.83	3.00	3.16	3.32	3.46	3.61	3.74	3.87	4.00	4.24	4.47
4.5	.055"/1.40mm	1.59	1.95	2.25	2.52	2.76	2.98	3.18	3.38	3.56	3.73	3.90	4.06	4.21	4.36	4.50	4.77	5.03
5.0	.057"/1.45mm	1.77	2.17	2.50	2.80	3.06	3.31	3.54	3.75	3.95	4.15	4.33	4.51	4.68	4.84	5.00	5.30	5.59
5.5	.060"/1.52mm	1.94	2.38	2.75	3.07	3.37	3.64	3.89	4.13	4.35	4.56	4.76	4.96	5.14	5.33	5.50	5.83	6.15
6.0	.062"/1.63mm	2.12	2.60	3.00	3.35	3.67	3.97	4.24	4.50	4.74	4.97	5.20	5.41	5.61	5.81	6.00	6.36	6.71
6.5	.064"/1.63mm	2.30	2.81	3.25	3.63	3.98	4.30	4.60	4.88	5.14	5.39	5.63	5.86	6.08	6.29	6.50	6.89	7.27
7.0	.067"/1.70mm	2.47	3.03	3.50	3.91	4.29	4.63	4.95	5.25	5.53	5.80	6.06	6.31	6.55	6.78	7.00	7.42	7.83
7.5	.070"/1.78mm	2.65	3.25	3.75	4.19	4.59	4.96	5.30	5.63	5.93	6.22	6.50	6.76	7.02	7.26	7.50	7.95	8.39
8.0	.072"/1.83mm	2.83	3.46	4.00	4.47	4.90	5.29	5.66	6.00	6.32	6.63	6.93	7.21	7.48	7.75	8.00	8.49	8.94
8.5	.074"/1.88mm	3.01	3.68	4.25	4.75	5.21	5.62	6.01	6.38	6.72	7.05	7.36	7.66	7.95	8.23	8.50	9.02	9.50
9.0	.076"/1.93mm	3.18	3.90	4.50	5.03	5.51	5.95	6.36	6.75	7.12	7.46	7.79	8.11	8.42	8.71	9.00	9.55	10.06
9.5	.078"/1.98mm	3.36	4.11	4.75	5.31	5.82	6.28	6.72	7.13	7.61	7.88	8.23	8.56	8.89	9.20	9.50	10.08	10.62
10.0	.080"/2.03mm	3.54	4.33	5.00	5.59	6.12	6.61	7.07	7.50	7.91	8.29	8.66	9.01	9.35	9.68	10.00	10.61	11.18
11.0	.083"/2.11mm	3.89	4.76	5.50	6.15	6.74	7.28	7.78	8.25	8.70	9.12	9.53	9.96	10.29	10.65	11.00	11.67	12.30
12.0	.087"/2.21mm	4.24	5.20	6.00	6.71	7.35	7.94	8.49	9.00	9.49	9.95	10.39	10.86	11.22	11.62	12.00	12.73	13.42
12.5	.098"/2.26mm	4.42	5.41	6.25	6.99	7.65	8.27	8.84	9.38	9.88	10.36	10.83	11.27	11.69	12.10	12.50	13.26	13.98
13.0	.091"/2.31mm	4.60	5.63	6.50	7.27	7.96	8.60	9.19	9.75	10.28	10.78	11.26	11.72	12.16	12.59	13.00	13.79	14.53
15.0	.096"/2.44mm	5.30	6.50	7.50	8.39	9.19	9.92	10.61	11.25	11.86	12.44	12.99	13.52	14.03	14.52	15.00	15.91	16.77
20.0	.109"/2.77mm	7.07	8.66	10.00	11.18	12.25	13.23	14.14	15.00	15.71	16.58	17.32	18.03	18.71	19.36	20.00	21.21	22.36
25.0	.125"/3.18mm	8.84	10.83	12.50	13.98	15.31	16.54	17.68	18.75	19.76	20.73	21.65	22.53	23.39	24.21	25.00	26.52	27.95
30.0	.141"/3.58mm	10.61	12.99	15.00	16.77	18.37	19.84	21.21	22.50	23.72	24.87	25.98	27.04	28.06	29.05	30.00	31.82	33.54
40.0	.156"/3.96mm	14.14	17.32	20.00	22.36	24.49	26.46	28.28	30.00	31.62	33.17	34.64	36.06	37.42	38.73	40.00	42.43	44.72
50.0	.172"/4.37mm	17.68	21.65	25.00	27.95	30.62	33.07	35.36	37.50	39.53	41.46	43.30	45.07	46.77	48.41	50.00	53.03	55.90
60.0	.188"/4.78mm	21.21	25.98	30.00	33.54	36.74	39.69	42.43	45.00	47.43	49.75	51.96	54.08	56.12	58.09	60.00	63.64	67.08

GPM

#3. THEN FIND YOUR ANSWER HERE!

#2. THEN FIND YOUR GPM IN THESE ROWS



Red (Cutting Nozzle) - 0°
Uses - Powerful pinpoint for spot cleaning of hard, unpainted surfaces or for high reach areas
Surfaces - Unpainted metal or concrete; DO NOT use on wood

Delivers the most concentrated stream possible. Capable of cutting through some materials and cleaning off very stubborn stains on concrete and other hard surfaces. Can cause damage to home siding, wood, and other materials so use with caution.



Yellow (Intense Washing Nozzle) - 15°
Uses - Intense cleaning of unpainted hard surfaces
Surfaces - Grills, driveways, concrete or brick walkways, unpainted brick or stucco

Provides enough force to work like a scraper, stripping paint, grease, and other materials from hard surfaces.



Green (Washing Nozzle) - 25°
Uses - Standard cleaning nozzle for most applications
Surfaces - Yard tools, sidewalks, lawn furniture, unpainted siding, stucco, gutters and eaves, concrete, brick surfaces

Perfect for cleaning dirt and grime from home siding, sidewalks, and metal furniture.



White (Rinsing Nozzle) - 40°
Uses - Cleaning of painted or delicate surfaces
Surfaces - Yard tools, sidewalks, lawn furniture, unpainted siding, stucco, gutters and eaves, concrete, brick surfaces

The wide spray allows you to wash a large area fast. Safe for most surfaces, excluding aluminum siding, windows, and vehicles.



Black (Detergent Application Nozzle) - Low Pressure
Uses - Applies cleaning solutions
Surfaces - Low pressure spray is safe on all surfaces. Always verify compatibility of cleaning solution prior to use.

When using detergent or other chemicals in your pressure washer, the black nozzle will siphon it into the water spray evenly. Spray is wide and low pressure

TABLE OF CONTENTS



ACCESSORIES & OPTIONS

NOZZLES	3
<ul style="list-style-type: none"> BARRACUDA ROTARY NOZZLE • GIANT ROTARY NOZZLES • MEG NOZZLE • QUICK COUPLER NOZZLES • ROTARY NOZZLE - COMMERCIAL DUTY • ROTARY NOZZLES - HEAVY DUTY • ROTARY SEWER/CULVERT NOZZLES • ROTARY TIP FILTER • SEWER/CULVERT NOZZLES 	
NOZZLES & WAND ACCESSORIES	4
<ul style="list-style-type: none"> FOAM CANNONS • GUTTER CLEANER • HYDRO EXCAVATION NOZZLE • PIT BOSS • STEAM NOZZLES • SURFACE CLEANER • UNDERCARRIAGE CLEANER • WATER BROOM • WET SANDBLAST KIT 	
GUN & WAND ASSEMBLIES	5
<ul style="list-style-type: none"> DUAL LANCE WANDS • EXTENSION WANDS • FITTINGS • FLEX WANDS & PUSH PULL LANCE • GUN & WAND ASSEMBLIES • GUN/WAND/QUICK COUPLER ASSEMBLY • HARNESS • O-RINGS • QUICK COUPLERS • TRIGGER GUNS • WANDS 	
HOSES	7
<ul style="list-style-type: none"> BLUE NON-MARKING HOSE • CLEAR CHEMICAL HOSE - 1/4" • CUSTOM ORDER HOSES • HOSE - 1/2" 6000 PSI • HOSE - 1/2" 10,000 PSI • HOSE - 1/2" 15,000 PSI • HOSE - 1/2" 6000 PSI • HOSE - 3/4" 8000 PSI • JOINER HOSE - 4000 PSI • LOW PRESSURE HOSE - 3/4" • MEGA-FLEX DRAIN CLEANING KIT • STANDARD HOSE - 1/2" 3000 PSI • STANDARD HOSE - 1/2" 4000 PSI • STEAM HOSE - 3/4" • STEAM HOSE - 1/2" • SWIVEL 	
HOSE REELS	9
<ul style="list-style-type: none"> 12V OR 120V HOSE REEL - INDUSTRIAL • 360° PIVOT HOSE REEL • A-FRAME HOSE REEL - INDUSTRIAL • BALL VALVES • GREASEABLE SUPER SWIVELS • HOSE REEL - ROLLER BRACKET GUIDE • HOSE REEL STANDS • HOSE REEL TROLLEY KITS • HYDRAULIC HOSE REEL • JOINER HOSE - 4000 PSI • MANUAL HOSE REEL - STAINLESS STEEL • PIVOTING HOSE GUARD • SPRING DRIVEN HOSE REEL • U-FRAME HOSE REEL 	
CHEMICAL CONTROL & INJECTION KITS	11
<ul style="list-style-type: none"> ACID PUMP • CHEMICAL MIXER • CHEMICAL SPRAYER • DEMA INLINE HIGH PRESSURE CHEMICAL INJECTOR • HIGH VOLUME FOAMER • SOLENOID CONTROL 	
OIL & GAS FIRED OPTIONS	12
<ul style="list-style-type: none"> DRAFT HOOD • DRAFT INDUCER • HIGH LOW GAS VALVES WITH DUAL TEMPERATURE CONTROLS • POWER DRAFT DAMPERS • POWER VENTER • RAIN CAP 	
ELECTRIC MOTOR CONTROLS	13
<ul style="list-style-type: none"> 50HZ ELECTRIC MOTOR • ELECTRICALLY HEATED TIMER • EMERGENCY SHUT-OFF • EXPLOSION PROOF PACKAGES • GROUND-FAULT CIRCUIT INTERRUPTERS • HEAVY DUTY AUTO STOP/START WITH SHUTDOWN TIMER • NEMA BOX • VFD FOR ELECTRIC MOTOR CONTROLS 	
FRAME OPTIONS & WHEEL KITS	
COLD WATER	14
<ul style="list-style-type: none"> CASTER WHEEL • COLD WATER CART • FIREHOUSE DISPLAY BASE • FLAT BASE FRAME • LEG FRAME • PUMP FRAME • COLD WATER • STAINLESS STEEL COLD WATER ROLL CAGES • STATIONARY COLD WATER • WALL MOUNT FOR DIRECT DRIVE 	
INDUSTRIAL HOT WATER ELECTRIC DRIVE	15
<ul style="list-style-type: none"> BRACKET OPTIONS • LEG FRAME • RAIN CAP • STAINLESS STEEL FRAMES • WHEEL KITS 	
INDUSTRIAL FULLY ELECTRICALLY HEATED	16
<ul style="list-style-type: none"> STAINLESS STEEL EXTERIOR OPTIONS • STAINLESS STEEL TANK • WHEEL KIT 	
COMMERCIAL & INDUSTRIAL GAS & DIESEL DRIVEN - OIL FIRED	17
<ul style="list-style-type: none"> ALUMINUM & STAINLESS COMMERCIAL ROLL CAGE FRAME • COMMERCIAL WHEEL KIT • FOAM FILLED TIRES • INDUSTRIAL WHEEL KIT • RAIN CAP • RENTAL ROLL CAGE 	
DRY STEAM GENERATORS	18
<ul style="list-style-type: none"> DRY STEAM SKID • HORIZONTAL • DRY STEAM SKID - VERTICAL • DRY STEAM WHEEL KIT • HORIZONTAL • DRY STEAM WHEEL KIT - VERTICAL 	
SKID & TANK FRAMES	19
<ul style="list-style-type: none"> CUSTOM ORDERS • INDUSTRIAL HOT WATER DIESEL 325G SUPERSKID • INDUSTRIAL HOT WATER DIESEL 525G SUPERSKID • INDUSTRIAL HOT WATER DIESEL 740G SUPERSKID • INDUSTRIAL HOT WATER GAS 225G SUPERSKID • INDUSTRIAL HOT WATER GAS 325G SUPERSKID • INDUSTRIAL HOT WATER GAS 525G SUPERSKID • LIGHT KIT • PICKUP SKID • PROPANE PICKUP SKID 	

TRAILER & JETTER OPTIONS

ENCLOSED TRAILERS	21
<ul style="list-style-type: none"> 8' ENCLOSED TRAILER PACKAGE 225G • 14' ENCLOSED TRAILER PACKAGE 525G • 16' ENCLOSED TRAILER PACKAGE 525G & 740G • BURNER SAFETY SWITCH AND EXHAUST VENT 	
OPEN TRAILERS	22
<ul style="list-style-type: none"> 8' OPEN TRAILER PACKAGE • 14' OPEN TRAILER PACKAGE • INDUSTRIAL HOT WATER GASOLINE BOLT ON TRAILER PACKAGE • PICKUP SKID BOLT ON TRAILER PACKAGE • RAIN CAP 	
JETTER ACCESSORIES	23
<ul style="list-style-type: none"> FOOT PEDAL INLINE • HOSE REEL TROLLEY KITS • HOT PACK • HYDRO EXCAVATION NOZZLE • JETTER BOX • JETTER HOSES • JETTER HOSE KIT • JETTER NOZZLE KITS • JOINER HOSES • ROTARY SEWER/CULVERT NOZZLES • SEWER/CULVERT NOZZLES • WINTERIZATION KIT 	

MACHINE OPTIONS & ACCESSORIES

TANKS	25
<ul style="list-style-type: none"> FLOAT TANK • FUEL TANKS, GAS CAPS, & TANK BRACKET • FUEL TANK OPTION • LARGE POLY WATER TANKS • SMALL POLY WATER TANKS • WINTERIZATION KIT 	
STEAM OPTIONS	26
<ul style="list-style-type: none"> STEAM HOSE - 3/4" • STEAM HOSE - 1/2" • STEAM NOZZLE • STEAM OPTION KITS/ DRY STEAM KIT/STANDARD KIT/STEAM OPTION KITS - DOUBLE UNLOADER TYPE / ULTIMATE STEAM KIT • STEAM WAND 	
WASH BAY ACCESSORIES	27
<ul style="list-style-type: none"> COMPLETE FOAM BRUSH ASSEMBLY • FESTOON SYSTEM • MAT CLAMPS • OVERHEAD BOOM • REMOTE WASH BAY CONTROL PANEL • SOAP SWITCH CONTROL PANEL • STAINLESS STEEL VACUUM • TRUCK WASH BRUSH • WAND HOLDER 	
COILS	28
<ul style="list-style-type: none"> CRN COILS • STAINLESS STEEL COILS - GAS FIRED • STAINLESS STEEL COILS - OIL FIRED 	
UPGRADES & ADDITIONS	
MISCELLANEOUS ITEMS	29
<ul style="list-style-type: none"> 12 VOLT BURNER - PRIMARY CONTROL • BATTERY • BRASS FLOW SWITCH • BURNER PARTS • COMPLETE MILLIVOLT KIT • DELAY TIMER • DIESEL ENGINE SHUTDOWN SYSTEM • ELECTRIC CLUTCH • ELECTRIC START UPGRADE KITS - COLD WATER • EMPEROR PUMP • FITTINGS • FLOW SWITCH • FUEL FILTERS • GENERATORS • GENERAL PUMP • HOUR METER • HOT WATER PACKING KIT GENERAL PUMP • HYDROSTATIC VALVE AND ASSEMBLY KIT • INLINE FILTERS • OUTLET TEMPERATURE GAUGE • PRESSURE GAUGE • PRESSURE SWITCH • PRIMARY CONTROL • PUMP KITS • REMOTE SWITCH • ELECTRIC DRIVEN ONLY • SPARK ARRESTOR • SUCTION KIT • THERMOSTAT • THERMAL RELIEF VALVES • UNLOADER - FLOW ACTIVATED • VOLT METER 	

SHORTHAND IDENTIFICATION KEY

"	INCHES	'	FOOT/FEET
PSI	POUNDS PER SQUARE INCH	GPM	GALLONS PER MINUTE
C/W	COUPLED WITH	QC	QUICK COUPLER
V	VOLT/VOLTAGE	GAL.	GALLON/S
HP	HORSE POWER	LB.	POUND/S
PH	PHASE	N/C	NO CHARGE

ALL PICTURES SHOWN ARE FOR ILLUSTRATION PURPOSE ONLY. ACTUAL PRODUCT MAY VARY.

Ask us! We stock all types of rotary nozzles for your preference.

ROTARY NOZZLES - COMMERCIAL DUTY



Rotating nozzles increases the force in which you clean. It easily cuts through tough cleaning jobs in half the time. Rated at 212° F



NOZ-RN365##	UP TO 3600 PSI
NOZ-RN400##C	ECONOMICAL - UP TO 4000 PSI - 212° F 1/4 FNPT INLET BRASS

SEWER / CULVERT NOZZLES



The reverse jets pull the hose through the pipe or sewer line and blast debris from line or pipe walls. Rated at 4200 PSI

NOZ-SWR18-5.5	1/8", 5.5 ORIFICE - 1 FORWARD & 3 BACK
NOZ-SWR14-5.5	1/4", 5.5 ORIFICE - 1 FORWARD & 3 BACK
NOZ-SWR38-5.5	3/8", 5.5 ORIFICE - 1 FORWARD & 3 BACK

ROTARY NOZZLES - HEAVY DUTY



The fully stainless steel model works at a higher pressure. Rated at 190° F

NOZ-RN510##	UP TO 5100 PSI - SPECIFY GPM & PSI
NOZ-RN870##	UP TO 8700 PSI - SPECIFY GPM & PSI
NOZ-RN110##	UP TO 11,000 PSI - SPECIFY GPM & PSI

ROTARY SEWER / CULVERT NOZZLES



These rotating nozzles add extra agitation speeding up your work, as the reverse jets pull the hose through the pipe or sewer line and blast debris from line or pipe walls. Rated at 4000 PSI

NOZ-SWR18-5.5R	1/8", 5.5 ORIFICE - 3 BACK
NOZ-SWR14-5.5R	1/4", 5.5 ORIFICE - 3 BACK
NOZ-SWR38-6R	3/8", 6.0 ORIFICE - 3 BACK

GIANT™ ROTARY NOZZLES



Giant's original Turbo Laser™ nozzles takes the power of a zero-degree nozzle and rotate it in either a circular or linear fashion. This allows the user to clean up to 70% faster than with a conventional zero-degree nozzle.

NOZ-RN360##G	3600 PSI, 195°F
NOZ-RN600##G	5800 PSI, 195°F

ROTARY TIP FILTER



Protect your turbo nozzle from damage caused by debris in the water flow and prolongs the life of your tip.

NOZ-RNF	1/4" INLET/ OUTLET, 5000 PSI, 300°F
---------	-------------------------------------

MEG NOZZLE



Hardened stainless steel nozzle for high pressure washes. A great, standard nozzle, high pressure, high heat multi-job nozzle.

NOZ-1/4MEG##	5000 PSI RATED TO 7000 PSI MAX
--------------	--------------------------------

BARRACUDA ROTARY NOZZLE



Considered industry standard for speed controlled rotary shotgunning.

NOZ-AP4-##	ATTACK TIP, 1/4" MVPT
NOZ-RN-BC-K	4.4-11 GPM, 2000 TO 21,750 PSI, 1/4" PORT (REQUIRES ATTACK TIPS)
SPECIFY GPM & PSI TO ENSURE CORRECT NOZZLES	

QUICK COUPLER NOZZLES



Contains complete set of 5 quick coupler nozzles for various spray patterns. Includes one black soap nozzle. 4000 PSI Rated, 4000 PSI max

KIT-NZPK0##	ORIFICE SIZE (5 PACK) - 0°/15°/25°/45°/SOAP
-------------	---

IDENTIFICATION KEY - REFER TO PAGE 1 FOR SIZING	
°	DEGREE
##	ORIFICE SIZE

NOZZLES & WAND ACCESSORIES



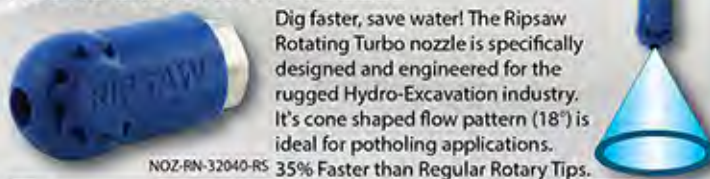
STEAM NOZZLES



For cleaning and thawing operations. Great for de-icing. For installation on steam wand WAN-STM see page 28.

NOZ-STM14-1.5F	FLAT, 1.5 MM, BRASS
NOZ-STM38-BLK	BRASS, BLANK STEAM

HYDRO EXCAVATION NOZZLE



Dig faster, save water! The Ripsaw Rotating Turbo nozzle is specifically designed and engineered for the rugged Hydro-Excavation industry. It's cone shaped flow pattern (18") is ideal for potholing applications.

NOZ-RN-32040-RS 35% Faster than Regular Rotary Tips.

NOZ-RN32040RS	RIPSAW - 3200 PSI, 4.0, 180°F
---------------	-------------------------------

GUTTER CLEANER



This accessory allows you to clean your gutters from the ground. No more getting up and down the ladder with gloved hands!



ACC-GC12	12" GUTTER POLE, 4000 PSI, 200°F
----------	----------------------------------

WET SANDBLAST KIT



Suction fed injection of sand and water to peel paint and rust from metal effortlessly with no dust. Leaves surface ready to prime. For 3 GPM up to 10 GPM flow.



ACC-SNDBLKT	FOR MACHINES 3000 PSI +, MUST SIZE NOZZLE. 0° UP TO 5500 PSI
-------------	--

SURFACE CLEANER



Used for removing dirt and grime from brick, concrete, sidewalks, driveways, shop floors in a contained fashion. Rated at 194°F, 12 GPM. Two nozzles required.

ACC-SRFLNR24	STAINLESS STEEL - 24" 4000 PSI RATED
SPECIFY GPM & PSI TO ENSURE CORRECT NOZZLES	

FOAM CANNONS



Allows full chemical coverage and activation. Ideal for vehicle and house washing.

NOZ-FMR4830	C/W 1.5 MM INJECTOR, 4.8 GPM @ 3000 PSI, 1/4" FEMALE CONNECT
NOZ-FMR4830T	WITH INJECTOR C/W BOTTLE, 4.8 GPM @ 3000 PSI, 1/4" FEMALE CONNECT
NOZ-FMR-COM	COMPACT FOAMER, 1-5 GPM @ 2500 PSI, 1/4" FEMALE CONNECT

PIT BOSS



Sludge sucker uses a high pressure water stream (up to 4000 PSI) to suck the sludge off the bottom of pits or tanks and ejects it through a 1-1/2" (15' long) hose to a disposal tank. The base unit attaches to the end of a pressure washer lance with a quick coupler for extension to the bottom of the pit. Uses a 0° tip for suction/power ejection.

ACC-PBSK	SLUDGE SUCKER KIT WITH NOZZLE, 5.5 NOZZLE 4000 PSI, 104°F
SPECIFY GPM & PSI TO ENSURE CORRECT NOZZLES	

WATER BROOM



Fits 1/4" wand. Ideal for cleaning floors, decks, driveway, and great for industrial flat surfaces.



ACC-WTRBRM4	4 NOZZLE 1/4" - 24" BROOM (MUST ADD NOZZLES) 4000 PSI RATED @ 140°F
SPECIFY GPM & PSI TO ENSURE CORRECT NOZZLES	

UNDERCARRIAGE CLEANER



Used for cleaning under cars, trucks and equipment. Ideal for detailing, rust check, vehicle repair centers, and firehouses. Rated at 194°F, 4000 PSI. 5'5" Reach, Two nozzles required.

ACC-UCC	UP TO 4000 PSI RATED
SPECIFY GPM & PSI TO ENSURE CORRECT NOZZLES	

TRIGGER GUNS



GUN-TG5010

GUN-TG5010V

GUN-TG5012RX

GUN-TG5680RX

GUN-TG7221-12

GUN-TG4010W

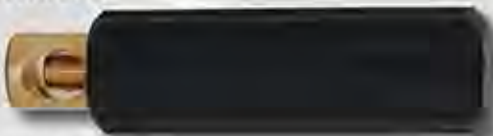
GUN-HV1732

GUN-WG1635S

Easy-Kleen offers a variety of pressure washer trigger guns.

GUN-TG5010	GENERAL PUMP GUN, 300°F, 5000 PSI , 10 GPM, 3/8" INLET, 1/4" OUTLET
GUN-TG5010V	PA VEGA 250, 300°F, 5000 PSI , 10 GPM, 3/8" INLET, 1/4" OUTLET
GUN-TG5012RX	RELAXED TRIGGER GUN, 300°F, 5000 PSI , 12 GPM, EASY PULL, HEAVY DUTY , 3/8" INLET, 1/4" OUTLET
GUN-TG5680RX	RELAXED TRIGGER GUN, 5600 PSI , 8 GPM, EASY PULL, RELOAD GUN , 3/8" INLET, 1/4" OUTLET
GUN-TG7221-12	PA BIG GUN, 210°F, 8100 PSI , 21 GPM, RELOAD GUN , 1/2" INLET/OUTLET
GUN-TG4010W	TRIGGER GUN, WEEPING, 300°F, 4000 PSI , 10 GPM, FOR COIN OPERATED CAR WASHES , 3/8" INLET, 1/4" OUTLET
GUN-HV1732	TRIGGER GUN, HIGH VOLUME, 300°F, 1950 PSI , 32 GPM, 1/2" INLET/OUTLET
GUN-WG1635S	WASH DOWN GUN, 16 GPM, 350 PSI , HIGH FLOW LOW PRESSURE

WANDS



WAN-SLH

Zinc coated, molded grip. 1/4" Male pipe thread. Also available in stainless steel. Rated at 300°



WAN-SL36



WAN-SLH	SIDE HANDLE GRIP FOR 1/4" PIPE WAND
WAN-SL12	12" INSULATED SINGLE LANCE
WAN-SL24	24" INSULATED SINGLE LANCE
WAN-SL36	36" INSULATED SINGLE LANCE
WAN-SL48	48" INSULATED SINGLE LANCE
WAN-SL36A-SS	36" INSULATED SINGLE LANCE, STAINLESS STEEL
WAN-SL40SS-12	40" SINGLE LANCE, STAINLESS STEEL, 1/2" MNPT
WAN-SL59	59" INSULATED SINGLE LANCE
WAN-SL79	79" INSULATED SINGLE LANCE

QUICK COUPLERS



For speedy and sturdy interchanging of tools and attachments.

Disconnect coupler band rated at 5000 PSI, 210°F

QUICK COUPLERS



For speedy and sturdy interchanging of tools and attachments.

Disconnect coupler band rated at 5000 PSI, 210°F

STANDARD QUICK COUPLER	
FIT-QC14F/M	1/4" FNPT/MNPT, BRASS
FIT-QC38F/M	3/8" FNPT/MNPT, BRASS
FIT-QC12F/M	1/2" FNPT/MNPT, BRASS
STANDARD QUICK COUPLER NIPPLES	
FIT-QCN14F/M	1/4" FNPT/MNPT, BRASS
FIT-QCN38F/M	3/8" FNPT/MNPT, BRASS
FIT-QCN12F/M	1/2" FNPT/MNPT, BRASS

STAINLESS STEEL QUICK COUPLER	
FIT-QC14F/M-SS	1/4" FNPT/MNPT, STAINLESS STEEL
FIT-QC38F/M-SS	3/8" FNPT/MNPT, STAINLESS STEEL
FIT-QC12F/M-SS	1/2" FNPT/MNPT, STAINLESS STEEL
STAINLESS STEEL QUICK COUPLER NIPPLES	
FIT-QCN14F/M-SS	1/4" FNPT/MNPT, STAINLESS STEEL
FIT-QCN38F/M-SS	3/8" FNPT/MNPT, STAINLESS STEEL
FIT-QCN12F/M-SS	1/2" FNPT/MNPT, STAINLESS STEEL

GUN & WANDS ASSEMBLIES



FITTINGS



FIT-S1003-B	HEX COUPLING, 1/4", FNPT
FIT-S1022-C	HEX NIPPLE, 3/8", STEEL (WMM0003GS)
FIT-S1022-CB	HEX NIPPLE, REDUCING, 3/8" X 1/4", STEEL (WMM0302GS)
FIT-S1022-D	HEX NIPPLE, 1/2", STEEL (WMM0004GS)
FIT-S1022-DB	HEX NIPPLE, REDUCING, 1/2" X 1/4", STEEL (RCF0402SS)
FIT-S1022-DC	HEX NIPPLE, REDUCING, 1/2" X 3/8", STEEL (WMM0403GS)
FIT-S1022-EC	HEX NIPPLE, REDUCING, 3/4" X 3/8", STEEL

O-RINGS



O-Rings for AP, Hansen, Foster, Parker, and other quick-coupler brands. Viton to 300°F

ORG-QC14HT	QC, 1/4", HIGH TEMP
ORG-QC38HT	QC, 3/8", HIGH TEMP
ORG-QC12HT	QC, 1/2", HIGH TEMP

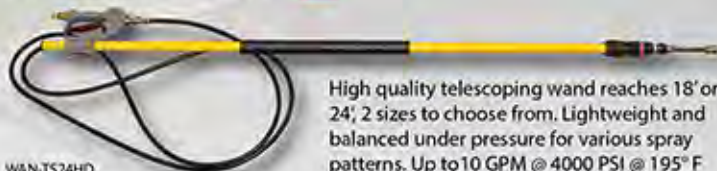
FLEX WANDS & PUSH PULL LANCE



Flexes for hard to clean areas. Ideal for car washes.

WAN-FLX18G2B	18", 2500 PSI, 1/4" MNPT INLET/OUTLET, 200°F (AVAILABLE IN BLUE, RED, & BLACK)
WAN-FLX90-5	90° FLEXIBILITY, 5000 PSI
WAN-PPL34SS	34" PUSH/PULL LANCE, STAINLESS STEEL, 3050 PSI

EXTENSION WANDS



High quality telescoping wand reaches 18' or 24'; 2 sizes to choose from. Lightweight and balanced under pressure for various spray patterns. Up to 10 GPM @ 4000 PSI @ 195°F

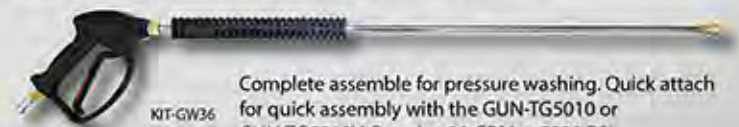
WAN-TS18HD	18'; EXTENSION WAND
WAN-TS24HD	24'; EXTENSION WAND

GUN & WAND ASSEMBLIES



GUN-GW36-XHP	PA VEGA, 7000 PSI (7207 - 38" GUN/WAND/ QUICK COUPLER ASSEMBLY - 36" STAINLESS STEEL)
GUN-GW48HT-XHP	48" WAND, 7250 PSI, 21 GPM, 1/2", 210°F
GUN-GW30-HDI	GUN/WAND COMBO, 22,000 PSI, HEAVY DUTY INDUSTRIAL, 10.6 GPM. W/ 30" WAND
NOZZLE EXTRA	

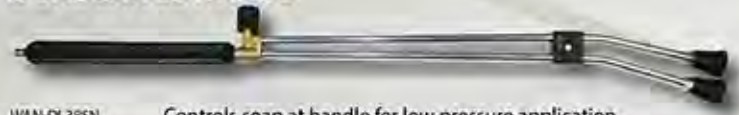
GUN/WAND/QUICK COUPLER ASSEMBLY



Complete assembly for pressure washing. Quick attach for quick assembly with the GUN-TG5010 or GUN-TG5010V. Rated at 10 GPM @ 5000 PSI. (Add V to upgrade to Vega Gun)

KIT-GW12	KIT - 5000 PSI GUN, 12" WAND, QC & NIPPLE
KIT-GW24	KIT - 5000 PSI GUN, 24" WAND, QC & NIPPLE
KIT-GW36	KIT - 4000 PSI GUN, 36" WAND, QC & NIPPLE
KIT-GW48	KIT - 5000 PSI GUN, 48" WAND, QC & NIPPLE
KIT-GW59	KIT - 5000 PSI GUN, 59" WAND, QC & NIPPLE
KIT-GW79	KIT - 5000 PSI GUN, 79" WAND, QC & NIPPLE

DUAL LANCE WANDS



Controls soap at handle for low pressure application.

WAN-DL38SN	36", WITH KNOB & SOAP NOZZLE
WAN-DL38SN-SH	36", WITH SIDE HANDLE & SOAP NOZZLE
NOZZLE 1/4" TIP EXTRA - HIGH PRESSURE	
SPECIFY PSI & GPM	

HARNESS



Used with extension wands to help stabilize and support the wand and for ease of use.

WAN-HRNS	SUPPORT BELT
----------	--------------

JOINER HOSE - 4000 PSI



HOS-JNR6

Single Braid
Connects short
distances.
Rated at 4000
PSI and 212° F

HOS-JNR2	3/8" X 2' (BETWEEN PUMP & COIL, COMMERCIAL UNITS)
HOS-JNR3	3/8" X 3'
HOS-JNR4	3/8" X 4'
HOS-JNR6	3/8" X 6'
HOS-JNR10-12	1/2" X 10'
AVAILABLE AT CUSTOM LENGTH - 3000 to 6000 PSI	

HOSE - 3/8" 8000 PSI



HOS-XHP50-38

Double Braided
Rated at 8000 PSI
250° F

HOS-XHP50-38	3/8" X 50'
HOS-XHP100-38	3/8" X 100'

STANDARD HOSE - 3/8" 4000 PSI



HOS-HW150-12

Single Braid
Rated at 4000 PSI
212° F

HOS-HW30	3/8" X 30'
HOS-HW50	3/8" X 50'
HOS-HW100	3/8" X 100'
HOS-HW150	3/8" X 150'
HOS-HW200	3/8" X 200'

HOSE - 1/2" 6000 PSI



Double Braided
Rated at 6000 PSI
212° F

HOS-HP50-12	1/2" X 50'
HOS-HP100-12	1/2" X 100'

STANDARD HOSE - 1/2" 3000 PSI



HOS-HW150-12

Single Braid
Rated at 3000 PSI
212° F

HOS-HW50-12	1/2" X 50'
HOS-HW100-12	1/2" X 100'
HOS-HW150-12	1/2" X 150'
HOS-HW200-12	1/2" X 200'

HOSE - 1/2" 10,000 PSI



Double Braided
Rated at 10,000 PSI
250° F

HOS-XHP50-12	1/2" X 50'
HOS-XHP100-12	1/2" X 100'

HOSE - 3/8" 6000 PSI



HOS-HP100

Double Braided
Rated at 6000 PSI
212° F

HOS-HP50	3/8" X 50'
HOS-HP100	3/8" X 100'
HOS-HP150	3/8" X 150'
HOS-HP200	3/8" X 200'

HOSE - 1/2" 15,000 PSI



HOS-XXHP50-12

Double Braided
Rated at 15,000 PSI
250° F

HOS-XXHP50-12	1/2" X 50' C/W MALE ENDS, 15,000 PSI
HOS-XXHP100-12	1/2" X 100' C/W MALE ENDS, 15,000 PSI
HOS-XXHP250-12	1/2" X 250' C/W MALE ENDS, 15,000 PSI, 250° F

HOSES



STEAM HOSE - 3/8"



HOS-STM100

Hose used for wet steam. Rated at 3000 PSI 325° F

HOS-STM50	3/8" X 50'
HOS-STM100	3/8" X 100'

BLUE NON-MARKING HOSE



HOS-HW50B

Single Braid Hose that does not mark. Rated at 4000 PSI 212° F

HOS-HW50B	3/8" X 50'
HOS-HW100B	3/8" X 100'
HOS-HW150B	3/8" X 150'
HOS-HW200B	3/8" X 200'
HOS-HW25-14B	1/4" X 25'
HOS-HW50-14B	1/4" X 50'
HOS-HW100-14B	1/4" X 100'

STEAM HOSE - 1/2"



Hose used for wet steam. Rated at 350 PSI 325° F

HOS-STM50-12	1/2" X 50'
HOS-STM100-12	1/2" X 100'

MEGA-FLEX DRAIN CLEANING KIT



KIT-5110-100

Used for cleaning drains, culverts, downspouts, as well as thawing and unclogging pipes. **Stainless steel drain nozzle included (NOZ-SWR).**



KIT-5110-50-18	1/8" X 50', 4350 PSI , 212°F
KIT-5110-100-18	1/8" X 100', 4000 PSI , 212°F
KIT-5110-50	1/4" X 50', 4350 PSI , 212°F
KIT-5110-100	1/4" X 100', 4400 PSI , 212°F
SPECIFY PSI & GPM - SEE FIRST PAGE FOR CHART	

SWIVEL



FIT-HPS38MFSS



FIT-HPS38MF

Allows your hose to swivel under high pressure. No more tangled hose!

BRASS	
FIT-HPS14MF	1/4", MALE X FEMALE, 10.5 GPM @ 4050 PSI , 194°F
FIT-HPS38MF	3/8", MALE X FEMALE, 10.5 GPM @ 4050 PSI , 194°F
FIT-HPS12MF	1/2", MALE X FEMALE, 10.5 GPM @ 4050 PSI , 325°F
STAINLESS STEEL	
FIT-HPS14MFSS	1/4", MALE X FEMALE, 10.5 GPM @ 5600 PSI , 194°F
FIT-HPS38MFSS	3/8", MALE X FEMALE, 10.5 GPM @ 5600 PSI , 194°F
FIT-HPS12MFSS	1/2", MALE X FEMALE, 27 GPM @ 3500 PSI , 180°F

LOW PRESSURE HOSE - 3/4"



Low pressure hose. Used between the water tank and the Pressure Washer to supply the Pressure Washer with water.

HOS-BYP38 K	3/8", LOW PRESSURE, BLACK
HOS-BYP12	1/2", LOW PRESSURE, BLACK
HOS-AIR12	1/2", 200 PSI, RED
HOS-AIR34	3/4", 200 PSI, RED

CUSTOM ORDER HOSES

Custom made hoses available upon request

Pricing subject to order



CLEAR CHEMICAL HOSE - 1/4"



CEM-HOSE3

Clear hose with suction filter.

CEM-HOSE3	3' ASSEMBLY COMPLETE WITH SUCTION FILTER, 55 PSI
-----------	--

HOSE NOT INCLUDED WITH HOSE REELS

A hose reel will extend the life of your high pressure cleaning hose considerably by providing safe tangle and kink free storage. It will also save you time when using and storing your high pressure cleaning equipment.

Every machine should have one!

U-FRAME HOSE REEL



Capacity: 150'
Commercial Hot Water unit
mount on plate for easy
installation.
Rated at 5000 PSI

HOS-HR150HP-U-BLK	HIGH PRESSURE U FRAME HOSE REEL, 150 FOOT, MANUAL, BLACK
KIT-HR150HP-3-BLK	HOSE REEL KIT 150' CAPACITY & 3' JOINER HOSE (FACTORY INSTALLED ON UNIT)

JOINER HOSE - 4000 PSI



HOS-JNR6

Single Braid
Connects short
distances.
Rated at 4000
PSI and 212° F

HOS-JNR2	3/8" X 2' (BETWEEN PUMP & COIL, COMMERCIAL UNITS)
HOS-JNR3	3/8" X 3'
HOS-JNR4	3/8" X 4'
HOS-JNR6	3/8" X 6'
HOS-JNR10	1/2" X 10'
AVAILABLE AT CUSTOM LENGTH - 3000 to 6000 PSI	

MANUAL HOSE REEL - STAINLESS STEEL



HOS-HR150SS

Ideal for corrosive or sanitary environments
such as food and fish plants, salt water off
shore operations, mills and mining.
Rated at 5000 PSI

HOS-HR150SS	150' CAPACITY
-------------	---------------

12V OR 120V HOSE REEL - INDUSTRIAL



Capacity: 150' to
500'; industrial 12
or 120 Volt hose
reel.

A-FRAME HOSE REEL - INDUSTRIAL



HOS-HR300HP-A-BLK

Can be mounted
on various units.
Rated at 5000 PSI

HOS-HR150HP-A-BLK	150' CAPACITY
HOS-HR300HP-A-BLK	300' CAPACITY

KIT-HR150HP-12V	12V, 150' CAPACITY
KIT-HR300HP-12V	12V, 300' CAPACITY
HOS-HR300HP-120V	120V, 300' CAPACITY
HOS-HR500HP-12V-BLK	12V, 500' CAPACITY
OTHER 120V MODELS AVAILABLE	

360° PIVOT HOSE REEL



HOS-PHR-MB

HOS-PHR100

Hose reel that swivels to
allow directional change
while unraveling
Rated at 5000 PSI and 194° F

HOS-PHR100	HOSE REEL - 360° PIVOT, 3/8" X 100' CAPACITY
HOS-PHR-MB	MOUNTING BRACKET FOR PIVOT HOSE REEL

SPRING DRIVEN HOSE REEL



HOS-TMPL-N-3100

Ideal for use in
garage and wash-
bay setups.
Self winding
Rated at 3000 PSI
100' capacity.

HOS-TMPL-N-3100	100', BLUE, RETRACTABLE
HOS-HSP38	HOSE STOP 3/8"
HOS-HSP12	HOSE STOP 1/2"

HOSE REELS



GREASEABLE SUPER SWIVELS



Upgraded swivel for hose reels. 90° stainless steel swivel with grease nipple, 5000 PSI, 400°F (Mount on any hose reel, except 360° pivot).

HOS-SSW38SS90	3/8"
HOS-SSW12SS90	1/2"
HOS-SSW34SS90	3/4"
HOS-SSW15SS90	1"

PIVOTING HOSE GUARDS



HOS-PHG18

Guides hose while in use, helping to protect the hose and extend the hose's lifespan.

HOS-PHG18	18" DRUM, FOR HR325 REELS - 325' HOSE REELS
HOS-PHG28	28" DRUM, FOR HR500 REELS - 500' HOSE REELS

HOSE REEL STANDS (ONLY)



Elevates the hose reel, making it easier to use, store, and access. **Hose and hose reels not included.**

FRAME-HRSX2	2-HOSE REELS, BLUE
FRAME-HRSX3	3-HOSE REELS, BLUE
FRAME-HRSX2, TAN-35GAL	2-HOSE REELS, C/W 35 GAL TANK

HOSE REEL TROLLEY KITS



FRAME-HR150WK

FRAME-HR300WK

For the ability to move hose around easily. **Hose and Joiner hose not included**

KIT-HR150WK	150' CAPACITY HOSE REEL WITH WHEEL KIT
KIT-HR300WK	300' CAPACITY HOSE REEL WITH WHEEL KIT

HOSE REEL - ROLLER BRACKET GUIDE



Easier to roll up hose, protecting it and extending its life span.

HOS-RB-BTM12-BLK	BOTTOM, 12" DRUM, BLACK
------------------	-------------------------

BALL VALVES



Full port steel ball valve. Carbon steel construction. 2 way. Female NPT threads.

CARBON BALL VALVES	
KIT-BVCS-QC-C	WITH QC, 3/8", 7000 PSI @ 180°F
KIT-BVCS-QC-D	WITH QC, 1/2", 7000 PSI @ 180°F
STAINLESS STEEL BALL VALVES	
KIT-BVSS-QC-C	WITH QC, 3/8", 3000 PSI
KIT-BVSS-QC-D	WITH QC, 1/2", 3000 PSI

HYDRAULIC HOSE REEL HIGH PRESSURE



HOS-HR500HP-HYD	HYDRAULIC HOSE REEL, 180°, RIGHT & LEFT SWIVEL (HOLDS 500' OF 1/2" HP HOSE / 300' OF 3/4" JETTER HOSE) HOSE NOT INCLUDED
HOS-HR1000HP-HYD	HYDRAULIC HOSE REEL, 180°, RIGHT & LEFT SWIVEL (HOLDS 1000' OF 1/2" HP HOSE / 600' OF 3/4" JETTER HOSE) HOSE NOT INCLUDED

CHEMICAL CONTROL & INJECTION KITS

DEMA INLINE HIGH PRESSURE CHEMICAL INJECTOR



Allows the chemical to go on at high pressure. Manual ON/OFF ball valve control. Also allows you to be able to meter the amount of chemical coming out.

KIT-CEM-DA203-B	KIT - 2 TO 3 GPM
KIT-CEM-DA204-B	KIT - 4 GPM
KIT-CEM-DA206-B	KIT - 5 TO 6 GPM

HIGH VOLUME FOAMER



Comes with gauges. Requires 35-125 PSI water and compressed air. 5 CFM - up to 142. Comes with metering tips, 50' hose, mounting bracket.

ACC-LF916105G	AIR AT HIGH PRESSURE FOAM INJECTION SYSTEM WITH BALL VALVE AND 50' HOSE AND NOZZLE ASSEMBLY
KIT-CEM-CIS	DOWNSTREAM CHEMICAL INJECTION AT 50% PRESSURE (AFTER COIL)

CHEMICAL MIXER



Maintains any reservoir with accurately preset mixed chemical solution. Use on a tank or barrel.

KIT-CEM-HYMT	HYDROMINDER WITH STAINLESS STEEL GALLON TANK FOR CHEMICAL MIXING
CAR-MM100	4.5 GPM @ 40PSI, INLET CONNECTION 3/4" FEMALE GARDEN HOSE

SOLENOID CONTROLS



CEM-RSS-2CD

Control chemical activation in wash bay ON/OFF wired to solenoid control.

CEM-RSS-1	SINGLE CHEMICAL SOLENOID CONTROL (ON FLOAT TANK UNITS) (NO CORD)
CEM-RSS-1CD	SINGLE CHEMICAL SOLENOID CONTROL WITH 50' CORD (WASH BAY UNITS)
CEM-RSS-2	DUAL CHEMICAL SOLENOID CONTROL (ON FLOAT TANK UNITS) (NO CORD)
CEM-RSS-2CD	DUAL CHEMICAL SOLENOID CONTROL WITH 50' CORD (WASH BAY UNITS)

CHEMICAL SPRAYER



The chemical sprayer is great for acid or chemical application. ON/OFF control at wand. With painted or Stainless Steel (SS) enclosure.

KIT-ECS-120V	PUMP 120V
KIT-ECS-120V-SS	PUMP 120V STAINLESS STEEL
KIT-ECS-12V	PUMP 12V
KIT-ECS-12V-SS	PUMP 12V STAINLESS STEEL

ACID PUMP



Great for acid application. Pump only wire to cord or 12V

PMP-DP115-1460	1.4 GPM @ 60 PSI, 115V
PMP-DP12-1260	1.2 GPM @ 60 PSI, 12V
PMP-DP12-17100	1.7 GPM @ 100 PSI, 12V
PMP-DP12-3545	3.5 GPM @ 45 PSI, 12V

OIL & GAS FIRED OPTIONS



DRAFT HOOD



For natural gas and propane, used for proper air flow.

PRO-DH8-EK	8", UP TO 390,000 BTU
PRO-DH10-EK	10", 510,000 TO 720,000 BTU
PRO-DH12-EK	12", 940,000 BTU

RAIN CAP



This option keeps rain and snow from entering your coil. Which increases coil and burner life

FRAME-WRC	RAIN CAP/SCOOP WELDED ON COIL EXHAUST
PLEASE SPECIFY COIL SIZE TO FIT (16", 18", 20", 24", 30")	

POWER DAMPER - 120 VOLT



ACC-OVD-8	VENT DAMPER, 8 INCH, 120VOLT
-----------	------------------------------

OIL FIRED DRAFT INDUCERS



A must for buildings with fans or negative pressure.

ACC-DI-3	120 VOLTS, RECOMMENDED SPECS (522,000 BTU/HR TO 835,000 BTU/HR) (8" TO 12" PIPE)
ACC-DI-4	120 VOLTS , RECOMMENDED SPECS (900,000 BTU/HR TO 1,800,000 BTU/HR) (10" TO 16" PIPE)

POWER DAMPERS - 24 VOLT - LP/NG



This option keeps rain and snow from entering your coil. Which increases coil and burner life

ACC-GPD-8	8" POWER DAMPER, 24 VOLT
ACC-GPD-10	10" POWER DAMPER, 24 VOLT
ACC-GPD-12	12" POWER DAMPER, 24 VOLT
ACC-GPD-WK	UNIVERSAL WIRING KIT (REQUIRED)

POWER VENTER



Combines the motor blower, and vent hood in one complete, easy to install unit.

KIT-PV8	POWER VENTER, 8 INCH INLET, OIL & GAS FIRED EQUIPMENT WITH CONTROL KIT, PRE-WIRED
---------	---

HIGH LOW GAS VALVES WITH DUAL TEMPERATURE CONTROLS



PRO-VS820A1278

To regulate temperature on system when using a 2 gun operation.

PRO-NG-DSGU-940	HIGH / LOW GAS VALVE WITH DUAL TEMPERATURE CONTROLS, UP TO 940,000 BTU, FOR TWO GUN OPERATION, NATURAL GAS
PRO-LP-DSGU-940	HIGH / LOW GAS VALVE WITH DUAL TEMPERATURE CONTROLS - UP TO 940,000 BTU, FOR TWO GUN OPERATION, PROPANE
PRO-EMGUS	ELECTRONIC MODULATING GAS VALVE SYSTEM (MODULATES FLAME OF HEATER)
PRO-VS820A1278	UNIVERSAL HONEYWELL GAS VALVE, LP/NAT GAS, SINGLE VALVE, STANDING PILOT
PRO-393691U	CONVERSION KIT, 3/4 INCH VALVE, CONVERT NATURAL GAS TO PROPANE
PRO-S861OU3009	PILOT IGNITION CONTROL MODULE

ELECTRIC MOTOR CONTROLS

HEAVY DUTY AUTO STOP START WITH SHUTDOWN TIMERS



This option gives you the ability to start and stop your unit by squeezing and releasing the trigger gun. This prevents the machine from sitting in bypass mode which will extend the life of your unit over time. It will also save you money because your resources are not being used when the machine is not in use.

HDASS/2/110/1	2 HP, 110V, 1 PH
HDASS/2/220/1	2 HP, 110V, 1 PH
HDASS/5/220/1	5 HP, 220V, 1 PH
HDASS/5/208/3	5 HP, 208V, 3 PH
HDASS/5/440/3	5 HP, 440V, 3 PH
HDASS/5/575/3	5 HP, 575V, 3 PH
HDASS/7.5/220/1	7.5 HP, 220V, 1 PH
HDASS/7.5/208/3	7.5 HP, 208V, 3 PH
HDASS/7.5/460/3	7.5 HP, 460V, 3 PH
HDASS/7.5/575/3	7.5 HP, 575V, 3 PH
HDASS/10/220/1	10 HP, 220V, 1 PH
HDASS/10/230/3	10 HP, 230V, 3 PH
HDASS/10/440/3	10 HP, 440V, 3 PH
HDASS/10/575/3	10 HP, 575V, 3 PH
HDASS/15/208/3	15 HP, 208V, 3 PH
HDASS/15/440/3	15 HP, 440V, 3 PH
HDASS/15/575/3	15 HP, 575V, 3 PH
HDASS/20/208/3	20 HP, 208V, 3 PH
HDASS/20/230/3	20 HP, 230V, 3 PH
HDASS/20/440/3	20 HP, 440V, 3 PH
HDASS/20/575/3	20 HP, 575V, 3 PH
HDASS/25/208/3	25 HP, 575V, 3 PH
HDASS/30/575/3	30 HP, 575V, 3 PH
HDASS/50/575/3	50 HP, 575V, 3 PH

VFD FOR ELECTRIC MOTOR CONTROLS



Variable frequency drive - Controls RPM of electric motor for required GPM

VFD-575-10	575V, 10 HP
VFD-575-20	575V, 20 HP
VFD-575-30	575V, 30 HP
VFD-575-40	575V, 40 HP
VFD-460-10	460V, 10 HP
VFD-460-20	460V, 20 HP
VFD-460-30	460V, 30 HP
VFD-460-40	460V, 40 HP

EXPLOSION PROOF PACKAGES



XP-PACKAGE	EXPLOSION PROOF ELECTRIC MOTOR PACKAGES ON ELECTRICALLY HEATED & COLD WATER PUMP SYSTEMS
------------	--

50HZ ELECTRIC MOTORS



Overseas voltage motors 50HZ. Various HP.

ELS-CW380/50	380V 50 HZ COLD WATER UPGRADE
ELS-HW380/50	380V 50 HZ HOT WATER UPGRADE

NEMA BOX



Stainless steel waterproof electrical box.

ELS-NEMA-LRG-SS	NEMA BOX, 10" X 8" X 6", STAINLESS STEEL
-----------------	--

GROUND-FAULT CIRCUIT INTERRUPTERS



Ground fault interrupter kicks out power when surge happens

ELS-GFCI-120/20	2 HP - SINGLE PHASE ONLY
ELS-GFCI-240/30	5 HP - SINGLE PHASE ONLY
ELS-GFCI-240/40	7.5 HP - SINGLE PHASE ONLY

EMERGENCY SHUT-OFFS

ELS-HTCO	IF INLET WATER TEMPERATURE EXCEEDS SET POINT (COLD WATER UNITS)
ELS-LWC	INCOMING FLOW IS INSUFFICIENT

ELECTRICALLY HEATED TIMER

ACC-EHTMR	24-HR TIMER FOR ELECTRICALLY HEATED UNITS, AUTOMATICALLY TURNS ON/OFF HEATER
-----------	--

FRAME OPTIONS AND WHEEL KITS COLD WATER



LEG FRAME



For cold water units with shroud with flat base.

FRAME-LS-3FT-ST575BDFB	36" FOR USE WITH FLAT BASE FRAME UNITS WITH 5/7.5/10 HP, 3 PH MOTORS
FRAME-LS-3FT-ST1520BDFB-O	36" FOR USE WITH FLAT BASE FRAME UNITS WITH 15/20 HP, 3 PH MOTORS, AND 10 HP, 1 PH MOTORS

CASTER



KIT-CASTER8-SS	8" CASTERS TWO SOLID, AND TWO SWIVEL W/LOCK, STAINLESS STEEL (AS SHOWN)
----------------	---

PUMP FRAME - COLD WATER



DOUBLE & TRIPLE STACKED PUMP FRAME (PRICE PER PUMP)	
FRAME-DS-2	DOUBLE STACK UP TO 10 HP
FRAME-TS-3	TRIPLE STACK UP TO 10 HP

FIREHOUSE DISPLAY BASE

* For display purposes only, not recommended for installation*



FRAME-FHF-DISPLAY	DISPLAY BASE FOR FIREHOUSE
-------------------	----------------------------

STAINLESS STEEL COLD WATER ROLL CAGES



All units can be ordered with aluminum or stainless steel frames. Stainless steel pumps and fittings are also available for food grade usage.

FRAME-CW57510BDERC-SS	ELECTRIC, BELT DRIVE, 5 & 7.5 HP
FRAME-CW1520BDERC-SS	ELECTRIC, BELT DRIVE, 15 & 20 HP

COLD WATER CART



This style for sale in the United States only

FRAME-ASCART-SM-AL	SMALL, FITS 6.5 HP GAS/2 HP ELECTRIC, ALUMINUM
FRAME-ASCART-LG-AL	LARGE, FITS 13 & 14 HP GAS/5 & 7 HP ELECTRIC, ALUMINUM
FRAME-ASCART-BD-AL	LARGE, ALUMINUM, BELT DRIVE

WALL MOUNT FOR DIRECT DRIVE



Ideal for locations with limited floor space. This frame style allows your unit to be up and out of the way.

FRAME-WM25DDE	COMMERCIAL DIRECT DRIVE PUMP, WALL MOUNTED FRAME 2 HP, 5 HP, & 7.5 HP (ALTERNATIVE TO CART STYLE FRAME, NO ADDITIONAL COST)
FRAME-WMCW57510	INDUSTRIAL C/W FLAT BASE AND SHROUD, 5 HP, 7.5 HP - 10 HP

FLAT BASE FRAME



FRAME-CW57510DDFBWS	C/W SHROUD, ELECTRIC MOTOR FOR 5, 7.5 & 10 HP, 3 PH, DIRECT DRIVE
FRAME-CW57510BDFBWS	FOR ELECTRIC 5, 7.5 & 10 HP, 3 PH, BELT DRIVE

STATIONARY COLD WATER



FRAME-CW1520BDFB	FLAT BASE OPEN FRAME - ELECTRIC MOTOR BELT DRIVE - 15 & 20 HP - 3 PH
------------------	--

INDUSTRIAL HOT WATER ELECTRIC DRIVE

RAIN CAP



This option keeps rain and snow from entering your coil. Which increases coil and burner life.

FRAME-WRC	RAIN CAP/SCOOP WELDED ON COIL EXHAUST
PLEASE SPECIFY COIL SIZE TO FIT (16", 18", 20", 24", 30")	

WHEEL KITS



FRAME-GF2248BD-WK	WHEEL KIT - GAS FIRED UNITS - 390,000 BTU
-------------------	---

BRACKET OPTIONS



Ask about our propane engine and propane burner units.

PROPANE TANK BRACKET	
FRAME-LP-TB40	PROPANE TANK BRACKET, HOLDS 40 LB TANK, C/W HOSE AND REGULATOR, FOR 290,000 BTU UNITS
FRAME-LP-TB100	PROPANE TANK BRACKET, 100 LB C/W HOSE AND REGULATOR
FRAME-LP-TB100X2	2 X PROPANE BRACKET (WHEELS EXTRA), 100 LB.
CHEMICAL BUCKET BRACKET	
FRAME-CHEMBRKT	5 GAL.

LEG FRAME



Regulations require gas fired machines must be a specified amount of distance away from combustible material. (Differs per region).

FRAME-LS-42"-GF2248	5/7.5/10 HP, 3 PH, 24"W X 42"H
FRAME-LS-42"-GF2548	10 HP, 1 PH, 27"W X 42"H
FRAME-LS-42"-GF2760	10/15/20 HP, 500,000 - 800,000 BTU, 29"W X 42"H
FRAME-LS-42"-GF3166	20 HP, 940,000 BTU GAS FIRED, 33"W X 42"H
FRAME-LS-42"-GF3480	50 HP, 42" W X 42" H

STAINLESS STEEL FRAMES

Stainless steel frames are marine grade and ideal for use in fish and food applications.



FRAME-GF2248BD-SS	STAINLESS STEEL - PROPANE / NATURAL GAS & OIL FIRED FRAMES, 390,000 BTU (WHEELS OPTIONAL)
FRAME-GF2760BD-SS	STAINLESS STEEL - PROPANE / NATURAL GAS & OIL FIRED FRAMES, TO 510,000 BTU - 720,000 BTU, STATIONARY

INDUSTRIAL FULLY ELECTRICALLY HEATED



FRAME-EHEATER-WK-2
CERTIFIED LIFTING EYES.



FRAME-EHEATER-WK-1
CERTIFIED LIFTING EYES.

STAINLESS STEEL EXTERIOR OPTIONS

FRAME-HTR1-SS	STAINLESS STEEL EXTERIOR SHEET METAL FOR FULLY ELECTRICALLY HEATED, SINGLE COIL UNIT, UP TO 48 KW
FRAME-ETR2-SS	STAINLESS STEEL STAINLESS STEEL EXTERIOR SHEET METAL FOR FULLY ELECTRICALLY HEATED, DOUBLE COIL UNIT, OVER 48 KW

STAINLESS STEEL TANK

FRAME-HTR1-SS-TANK ASSBLY	STAINLESS STEEL HEAT EXCHANGER TANK FOR FULLY ELECTRICALLY HEATED, SINGLE COIL UNIT, UP TO 48 KW
FRAME-HTR2-SS-TANK ASSBLY	STAINLESS STEEL HEAT EXCHANGER TANK FOR FULLY ELECTRICALLY HEATED, DOUBLE COIL UNIT, OVER 48 KW

WHEEL KIT

FRAME-EHEATER-WK-1	WHEEL KIT FOR A FULLY ELECTRICALLY HEATED UNIT, SINGLE COIL, C/W HEAVY DUTY CASTERS, LIFTING EYES
FRAME-EHEATER-WK-2	WHEEL KIT FOR A FULLY ELECTRICALLY HEATED UNIT, DUAL COIL, C/W HEAVY DUTY CASTERS, LIFTING EYES

EXTRA CHARGE FOR NON MARKING CASTERS

OPTIONAL UPGRADE - CERTIFIED LIFTING EYES (FOR OIL FIELDS)

RENTAL ROLL CAGE



Rental Frame Option with grab bar surround for easy loading and total protection

UPGRADE

FRAME-MAG15-RTL C/W BATTERY BOX, 13-15 HP, FOAM FILLED TIRES (FRAME UPGRADE) GRAB BAR SURROUND

ALUMINUM & STAINLESS COMMERCIAL ROLL CAGE FRAME



Aluminum and stainless steel frames are ideal for corrosive or sanitary environments such as food and fish plants, salt water off shore operations, mills and mining. Stainless steel pumps and fittings are also available for food grade usage.

ALUMINUM

FRAME-MAG3RRC-ALU	ALUMINUM COMMERCIAL ROLL CAGE FRAME, 5 HP ELECTRIC
FRAME-MAG4RRC-AL	ALUMINUM COMMERCIAL ROLL CAGE FRAME, 7.5 HP ELECTRIC
FRAME-MAG15RRC-AL	ALUMINUM COMMERCIAL ROLL CAGE FRAME, 13-15 HP GAS

STAINLESS STEEL

FRAME-MAG3RRC-SS	STAINLESS STEEL COMMERCIAL ROLL CAGE FRAME, 5 HP ELECTRIC
FRAME-MAG4RRC-SS	STAINLESS STEEL COMMERCIAL ROLL CAGE FRAME, 7.5 HP ELECTRIC
FRAME-MAG15RRC-SS	STAINLESS STEEL COMMERCIAL ROLL CAGE FRAME, 13-15 HP GAS

COMMERCIAL WHEEL KIT



Never have a flat tire again because of the sturdy solid, caster wheel.

FRAME-WKIT-MAG CASTER WHEEL KIT FOR ROLL CAGE FRAME 8" SWIVEL CASTERS / CRAB LEG EXTENSION

FOAM FILLED TIRES



Never have a flat tire again because of the sturdy, protective foam inside the tire.

RUB-TIRE13-FF 13", 3/4" AXLE - EACH

INDUSTRIAL WHEEL KIT



FRAME-GRWK LIGHT - INDUSTRIAL HOT WATER GAS FRAME #2

FRAME-GRWKSD SUPER DUTY INDUSTRIAL HOT WATER GAS FRAME #2

RAIN CAP



This option keeps rain and snow from entering your coil. Which increases coil and burner life

FRAME-WRC RAIN CAP/SCOOP WELDED ON COIL EXHAUST

PLEASE SPECIFY COIL SIZE TO FIT (16", 18", 20", 24", 30")

DRY STEAM GENERATOR



DRY STEAM SKID - HORIZONTAL



Allows you to load and unload your complete dry steam package with ease.

DRY STEAM SKID - VERTICAL



Allows you to load and unload your complete dry steam package with ease with the use of the forklift slots.

SKID-STEAM-PU-225-H	MOBILE SKID FOR HORIZONTAL DRY STEAMER 225 GAL. TANK
SKID-STEAM-PU-325-H	MOBILE SKID FOR HORIZONTAL DRY STEAMER 325 GAL. TANK

FRAME-STEAM-PU-225-V	MOBILE SKID FOR VERTICAL STEAMER 225 GAL. TANK
FRAME-STEAM-PU-325-V	MOBILE SKID FOR VERTICAL STEAMER 325 GAL. TANK

DRY STEAM WHEEL KIT - HORIZONTAL



For easy portability on smooth surfaces. Easy turn casters with two locking brakes.

DRY STEAM WHEEL KIT - VERTICAL



For easy portability on smooth surfaces. Easy turn casters with two locking brakes.

FRAME-STM20-WK-H	WHEEL KIT FOR HORIZONTAL DRY STEAM UNIT PJO20ST-H
FRAME-STM30-WK-H	WHEEL KIT FOR HORIZONTAL DRY STEAM UNIT PJO30ST-H
FRAME-STM40-WK-H	WHEEL KIT FOR HORIZONTAL DRY STEAM UNIT PJO40ST-H
FRAME-STM50-WK-H	WHEEL KIT FOR HORIZONTAL DRY STEAM UNIT PJO50ST-H

FRAME-STM20-WK-V	WHEEL KIT FOR VERTICAL DRY STEAM UNIT PJO20ST-V
FRAME-STM30-WK-V	WHEEL KIT FOR VERTICAL DRY STEAM UNIT PJO30ST-V
FRAME-STM40-WK-V	WHEEL KIT FOR VERTICAL DRY STEAM UNIT PJO40ST-V
FRAME-STM50-WK-V	WHEEL KIT FOR VERTICAL DRY STEAM UNIT PJO50ST-V

MACHINES, HOSES, AND HOSE REELS ARE NOT INCLUDED

PICKUP SKID



Add any Commercial Gas or Diesel Driven Cold Water or 12 Volt Hot Water unit to this frame for 100% portable cleaning.

SKID-PU-225	COMMERCIAL SKID & TANK UNIT C/W 225 GAL. TANK & PLUMBING
-------------	--

PROPANE PICKUP SKID



Add your Commercial Propane Fired units to this frame.

SKID-PU-225-PRO	COMMERCIAL SKID & TANK UNIT FOR PROPANE MOBILE WASH UNIT C/W 225 GAL. TANK & PLUMBING, 2 - 100 LB BOTTLES (FOR FOOD WAREHOUSE CLEANING)
OPTIONAL UPGRADE - CERTIFIED LIFTING EYES (FOR OIL FIELDS)	

INDUSTRIAL HOT WATER GAS 225G SUPERSKID



Add your Industrial Hot Water Gas units to this frame. 225 gal. water tank.



Add your Industrial Hot Water Gas units to this frame. 225 gal. water tank capacity. Designed to be transported in an 8' box truck.

FILL&PLAY-GRIZ-225SF

SUPERSKID-IHWG-225-2R	SUPERSKID FOR INDUSTRIAL HOT WATER GAS UNITS C/W 225 GAL. TANKS AND PLUMBING (INCLUDES 2 REEL CAPACITY)
SUPERSKID-IHWG-225	SUPERSKID FOR INDUSTRIAL HOT WATER GAS UNITS C/W 225 GAL. TANKS AND PLUMBING (2 REEL CAPACITY - ADDITIONAL COST)
SUPERSKID-IHWG-225SF	SUPERSKID FOR INDUSTRIAL HOT WATER GAS UNITS C/W 225 GAL. TANKS AND PLUMBING (2 REEL CAPACITY - ADDITIONAL COST) FITS IN 8' PICKUP TRUCK BOX
OPTIONAL UPGRADE - CERTIFIED LIFTING EYES (FOR OIL FIELDS)	

INDUSTRIAL HOT WATER GAS 325G SUPERSKID



Add your Industrial Hot Water Gas 325G SUPER SKID unit to this frame. 325 gallon water tank included with purchase.

INDUSTRIAL HOT WATER GAS 525G SUPERSKID



Add your Industrial Hot Water Gas unit to this frame. Larger capacity 525 gal. water tank.

SUPERSKID-IHWG-325	SUPERSKID INDUSTRIAL HOT WATER GAS UNIT C/W 325 GAL. TANK AND PLUMBING (HOSE REEL EXTRA)
SUPERSKID-IHWG-325-2R	SUPERSKID INDUSTRIAL HOT WATER GAS UNIT C/W 325 GAL. TANK AND PLUMBING, (2 REEL CAPACITY - ADDITIONAL COST)
OPTIONAL UPGRADE - CERTIFIED LIFTING EYES (FOR OIL FIELDS)	

SUPERSKID-IHWG-525	INDUSTRIAL HOT WATER GAS UNIT C/W 525 GAL. TANKS AND PLUMBING, (2 REEL CAPACITY - ADDITIONAL COST)
OPTIONAL UPGRADE - CERTIFIED LIFTING EYES (FOR OIL FIELDS)	

SKID & TANK FRAMES



MACHINES, HOSES, AND HOSE REELS ARE NOT INCLUDED

INDUSTRIAL HOT WATER DIESEL 325G SUPERSKID



Add your Industrial Hot Water Diesel to this frame, 325 gal. capacity. With optional relocation panel.

INDUSTRIAL HOT WATER DIESEL 525G SUPERSKID



Add your Industrial Hot Water Diesel to this frame. Larger capacity 525 gal. water tank.

SUPERSKID-IHWD2-325	C/W 325 GAL. TANK, PLUMBING AND HOSE REEL (2 REEL CAPACITY ADDITIONAL COST)
RL-FP-PANEL	OPTIONAL UPGRADE - RELOCATE CONTROL PANEL
OPTIONAL UPGRADE - CERTIFIED LIFTING EYES (FOR OIL FIELDS)	

SUPERSKID-IHWD2-525	INDUSTRIAL HOT WATER DIESEL SUPERSKID FOR #3 FRAME C/W 525 GAL. TANK, PLUMBING AND HOSE REEL (2 REEL CAPACITY ADDITIONAL COST)
RL-FP-PANEL	OPTIONAL UPGRADE - RELOCATE CONTROL PANEL
OPTIONAL UPGRADE - CERTIFIED LIFTING EYES (FOR OIL FIELDS)	

INDUSTRIAL HOT WATER DIESEL 740G SUPERSKID



Add your Industrial Hot Water Diesel to this frame, largest capacity of 740 gal. Ideal for mining/ mill applications. ***With optional light kit and control panel relocation***

SUPERSKID-IHWD2-740	INDUSTRIAL HOT WATER DIESEL SUPERSKID UNIT FOR #2 FRAME C/W 740 GAL. TANK & PLUMBING (2 REEL CAPACITY ADDITIONAL COST)
SUPERSKID-IHWD3-740	INDUSTRIAL HOT WATER DIESEL SUPERSKID UNIT FOR #3 FRAME C/W 740 GAL. TANK, PLUMBING & HOSE REEL (2 REEL CAPACITY ADDITIONAL COST)
RL-FP-PANEL	OPTIONAL UPGRADE - RELOCATE CONTROL PANEL
OPTIONAL UPGRADE - CERTIFIED LIFTING EYES (FOR OIL FIELDS)	

CUSTOM ORDERS

We offer complete aluminum, stainless steel, galvanized, powder coated, engineered frames, and systems to meet your specific needs. We utilize solid works 3D design software. Please do not hesitate to inquire about any special requests. We never say NO! Call today!



LIGHT KIT



KIT-LIGHTARROW	MUNICIPAL FLASHING LIGHT / ARROW / 3 WORK LIGHTS - KIT MOUNTED ON ANY SKID FRAME OR TRAILER (FACTORY INSTALL)
----------------	---

8' ENCLOSED TRAILER PACKAGE 225G



Keeps equipment ready to go. Equipment is protected from elements. Shown with Easy-Kleen sewer jetter installed. Allows you to drop trailer on job site and free up your truck.

KIT-TRAILER8	8' ENCLOSED TRAILER WITH SINGLE 3500 LB AXLE, BARN STYLE REAR DOORS, 5' WIDE, 225 GAL. WATER TANK, 10 GAL. ANTIFREEZE TANK, ROOF VENT SAFETY SWITCH TO SHUT OFF THE BURNER. RIGGED WITH UNIT OF CHOICE (MACHINE EXTRA).
--------------	---

14' ENCLOSED TRAILER PACKAGE 525G



Great for industrial commercial wash or jetter system.

KIT-TRAILER14-525	COMPLETE TURNKEY TRAILER KIT, INCLUDES 14' ENCLOSED TRAILER, TANDEM 5200 LB AXLES, REAR BARN STYLE DOORS, SIDE DOOR, ROOF VENT SAFETY SWITCH TO SHUT OFF THE BURNER, 525 GAL. WATER TANK, 20 GAL. ANTIFREEZE KIT, HOSE REEL W/ 100' OF HIGH PRESSURE HOSE, RIGGED WITH UNIT OF CHOICE
-------------------	---

16' ENCLOSED TRAILER PACKAGE 525G & 740G



KIT-TRAILER16-525	COMPLETE TURNKEY TRAILER KIT INCLUDES - 16' ENCLOSED CARGO TRAILER, TANDEM 6000 LB. AXLES, ELECTRIC BRAKES, REAR BARN STYLE DOORS, 1500 WATT TRAILER HEATER, ROOF VENT SAFETY SWITCH TO SHUT OFF THE BURNER, INSULATED INTERIOR-WALLS AND ROOF WHITE METAL LINE, INSULATED FLOOR 1-1/2 URETHANE FOAM, PAINTED FLOOR, 525 GAL. WATER TANK, 35 GAL. ANTIFREEZE KIT, 100' HIGH PRESSURE HOSE, 150' CAPACITY HOSE REEL, HOSE REEL RACK. RIGGED WITH UNIT OF CHOICE
-------------------	--

KIT-TRAILER16-740	COMPLETE TURNKEY TRAILER KIT INCLUDES - 16' ENCLOSED CARGO TRAILER, TANDEM 6000 LB. AXLES, ELECTRIC BRAKES, REAR BARN STYLE DOORS, 1500 WATT TRAILER HEATER, ROOF VENT SAFETY SWITCH TO SHUT OFF THE BURNER, INSULATED INTERIOR-WALLS AND ROOF WHITE METAL LINE, INSULATED FLOOR 1-1/2 URETHANE FOAM, PAINTED FLOOR, 740 GAL. WATER TANK, 35 GAL. ANTIFREEZE KIT, 100' HIGH PRESSURE HOSE, 150' CAPACITY HOSE REEL, HOSE REEL RACK. RIGGED WITH UNIT OF CHOICE
-------------------	--

BURNER SAFETY SWITCH AND EXHAUST VENT



Steel roof vent with special safety switch that will not allow the burner to operate without opening the vent. Allowing for better venting and increased safety.

KIT-STACKCOVER	ENCLOSED TRAILER EXHAUST VENT KIT WITH FLIP UP LID AND SAFETY CONTROL THAT INLOCKS WITH BURNER
----------------	--

TRAILER & JETTER OPTIONS
OPEN TRAILERS



8' OPEN TRAILER PACKAGE

Equipment ready to go. Great for mobile service and has a compact design.

RAIN CAP



This option keeps rain and snow from entering your coil. Which increases coil and burner life

KIT-TRAILER-8-225-5K-OP	8' SINGLE AXLE 225 GAL. WATER TANK, 10 GAL. WINTERIZATION TANK
ADDITIONAL COST FOR OPTIONAL ELECTRIC BRAKE	

FRAME-WRC	RAIN CAP/SCOOP WELDED ON COIL EXHAUST
PLEASE SPECIFY COIL SIZE TO FIT (16", 18", 20", 24", 30")	

14' OPEN TRAILER PACKAGE



KIT-TRAILER-14-2-525	14' TANDEM 5200 LB. AXLES 525 GAL. WATER TANK, 20 GAL. WINTERIZATION TANK
KIT-TRAILER-14-2	14' TANDEM 5200 LB. AXLES DUAL 225 GAL. WATER TANKS, 20 GAL. WINTERIZATION TANK (GEARED TO HOLD WASH CONTAINMENT MAT IN REAR STORAGE)

INDUSTRIAL HOT WATER GASOLINE BOLT ON TRAILER PACKAGE



Axle kit and hitch mounts on Industrial Hot Water Gasoline Units. Axle trailer 5200 lbs, goes underneath machine.

FRAME-TKIT-GR2FBS	BOLT ON TRAILER PACKAGE - 5200 LB. AXLE - TONGUE (FOR F-GR2FBS)
-------------------	---

PICKUP SKID BOLT ON TRAILER PACKAGE



Axle kit and hitch mount on pickup skid units with 225 gal. tank.



FRAME-TKIT-PU1BS	BOLT ON TRAILER PACKAGE - 3500 LB. AXLE - TONGUE (FOR PJO4035-K-G-PSR)
------------------	--

JETTER BOX



Allows you to use remote at end of hose to turn ON/OFF, Reel in hose motor, etc.

ACC-RRS	OPTIONAL REMOTE FOR HOSE REEL IN, MOTOR OFF, SPEED CONTROL, PRESSURE ON/OFF
---------	---

FOOT PEDAL INLINE



When operating sewer or jetter machine, this allows hands to be free.

SWT-FTSW-SNP-Y

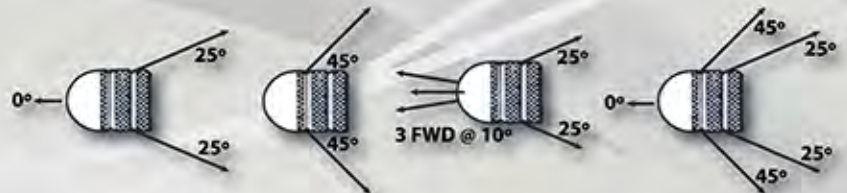
SWT-FV5012

SWT-FTSW-SNP-Y	FOOT SWITCH, SNAP ACTION CONTACTS, YELLOW
SWT-FV5012	SWITCH, FOOT VALVE, 12 GPM @ 5000 PSI, 300°F, 3/8" INLET FNPT, 1/4" FNPT OUTLET (IS MANDATORY FOR SOME MACHINES)

JETTER NOZZLE KITS



Selection of 4, so you are covered for any jetting application.



NOZ-KIT-JTR1130-38	JETTER NOZZLE KIT, 11 GPM @ 3000 PSI, 3/8" NPT, 4-PACK
NOZ-KIT-JTR1230-38	JETTER NOZZLE KIT, 12 GPM @ 3000 PSI, 3/8", 4 PACK
NOZ-KIT-JTR1840-12	JETTER NOZZLE KIT, 18 GPM @ 4000 PSI, 1/2" NPT, 4-PACK
NOZ-KIT-JTR2039-38	JETTER NOZZLE KIT, 20 GPM @ 4000 PSI, 3/8" NPT, 4-PACK

ROTARY SEWER / CULVERT NOZZLES



These rotating nozzles add extra agitation speeding up your work, as the reverse jets pull the hose through the pipe or sewer line and blast debris from line or pipe walls. Rated at 4000 PSI

NOZ-SWR18-5.5R	1/8", 5.5 ORIFICE - 3 BACK
NOZ-SWR14-5.5R	1/4", 5.5 ORIFICE - 3 BACK
NOZ-SWR38-6R	3/8", 6.0 ORIFICE - 3 BACK

SEWER / CULVERT NOZZLES



The reverse jets pull the hose through the pipe or sewer line and blast debris from line or pipe walls. Rated at 4200 PSI

NOZ-SWR18-5.5	1/8", 5.5 ORIFICE - 1 FORWARD & 3 BACK
NOZ-SWR14-5.5	1/4", 5.5 ORIFICE - 1 FORWARD & 3 BACK
NOZ-SWR38-5.5	3/8", 5.5 ORIFICE - 1 FORWARD & 3 BACK

HYDRO EXCAVATION NOZZLE



NOZ-RN-32040RS

Dig faster, save water! The Ripsaw Rotating Turbo nozzle is specifically designed and engineered for the rugged Hydro-Excavation industry. It's cone shaped flow pattern (18") is ideal for potholing applications. 35% Faster than Regular Rotary Tips.



NOZ-RN32040RS	RIPSAW - 3200 PSI, 4.0, 180°F
---------------	-------------------------------



TRAILER & JETTER OPTIONS

JETTER ACCESSORIES



JETTER HOSES



HOS-SFX18-50	1/8" X 50' C/W MALE ENDS, 4800 PSI, BLACK
HOS-SFX18-100	1/8" X 100' C/W MALE ENDS, 4800 PSI, BLACK
HOS-SFX14-50	1/4" X 50' C/W MALE ENDS, 4400 PSI, BLACK
HOS-JTR100-14	1/4" X 100' C/W MALE ENDS, 4400 PSI, BLACK
HOS-JTR200-14	1/4" X 200' C/W MALE ENDS, 4400 PSI, BLACK
HOS-JTR300-14	1/4" X 300' C/W MALE ENDS, 4400 PSI, BLACK
HOS-JTR100-38	3/8" X 100' C/W MALE ENDS, 4000 PSI, BLACK
HOS-JTR200-38	3/8" X 200' C/W MALE ENDS, 4000 PSI, BLACK
HOS-JTR300-38	3/8" X 300' C/W MALE ENDS, 4000 PSI, BLACK
HOS-JTR100-12	1/2" X 100' C/W MALE ENDS, 4000 PSI, BLACK
HOS-JTR200-12	1/2" X 200' C/W MALE ENDS, 4000 PSI, BLACK
HOS-JTR300-12	1/2" X 300' C/W MALE ENDS, 4000 PSI, BLACK
HOS-JTR400-12	1/2" X 400' C/W MALE ENDS, 4000 PSI, BLACK
HOS-JTR500-12	1/2" X 500' C/W MALE ENDS, 4000 PSI, BLACK
HOS-JTR500-34	3/4" X 500' C/W MALE ENDS, 2400 PSI, ORANGE
PIRANHA HOSE IS SPECIAL ORDER ONLY	

HOSE REEL TROLLEY KITS



For the ability to move hose around easily.
Hose and Joiner hose not included

FRAME-HR150WK	150' CAPACITY HOSE REEL WITH WHEEL KIT
FRAME-HR300WK	300' CAPACITY HOSE REEL WITH WHEEL KIT

JETTER HOSE KIT



Jetter hose and kit. A great base set for your jetting needs. **Hose is not included.**

KIT-HR300HP-12V	JETTER HOSE KIT, C/W 12V MOTOR, REEL & BRACKET
-----------------	--

JOINER HOSES



Single Braid
Connects short distances.
Rated at 4000 PSI and 212°F

HOS-JNR2	3/8" X 2'
HOS-JNR3	3/8" X 3'
HOS-JNR6	3/8" X 6'
HOS-JNR10-12	1/2" X 10'
AVAILABLE AT CUSTOM LENGTH - 3000 TO 6000 PSI	

HOT PACK

For EZJ3512G



Add hot water to your Sewer Jetter system to increase efficiency. Turns your jetter into a Hot Water Jetter. Increase the speed that you would clean out ice or grease versus just cold water.

PJO440	MODULAR HEATER, HOT WATER, HIGH PRESSURE, OIL FIRED, 5000 PSI, 12V BURNER, 440,000 BTU PLUMBED FOR JETTER
PJO440VCB	MODULAR HEATER, HOT WATER, HIGH PRESSURE, OIL FIRED, 5000 PSI, 12V BURNER, 440,000 BTU PLUMBED FOR JETTER - CABINET ENCLOSED

WINTERIZATION KIT



Winterization kit for jetter plumb into existing system to protect pump and hoses from freezing.

KIT-WTZ-JTR	WINTERIZATION KIT FOR PJJ1235G JETTER
-------------	---------------------------------------

WINTERIZATION KIT



Adapt to most models allows you to quickly winterize your pressure washer in the cooler climates to protect pump, coil, and hose. For hot water units

KIT-WTZ-BRKT	WINTERIZATION KIT WITH BRACKET
--------------	--------------------------------

FUEL TANK OPTION



For larger fuel capacity adaptable to some of the INDUSTRIAL HOT WATER DIESEL Units.

STE-TAN-100G	100 GAL. STEEL (FOR INDUSTRIAL HOT WATER DIESEL #3 FRAME)
--------------	---

FLOAT TANK



For water supply to pump systems. Garden hose connection. A plastic tank for regulating constant water pressure to pressure washer.

KIT-FLOAT TANK(CHW)	1 GALLON FLOAT TANK KIT FOR COMMERCIAL HOT WATER UNIT, COMES WITH BALL VALVE FOR HIGH PRESSURE SOAP
KIT-FLOAT TANK(IHW)	18 GALLON FLOAT TANK KIT FOR INDUSTRIAL HOT WATER UNIT, COMES WITH BALL VALVE FOR HIGH PRESSURE SOAP

LARGE POLY WATER TANKS

Frame Not Included



Steel Pipe Straps



TAN-225GAL	225 GAL. DIMENSIONS, 49"L X 38"W X 41"H
STEEL PIPES ADDITIONAL COST FOR 225 GAL. POLY WATER TANK	
TAN-325GAL	325 GAL. DIMENSIONS, 68"L X 38"W X 43"H
TAN-525GAL	525 GAL. DIMENSIONS, 72"L X 49"W X 54"H
STEEL PIPE STRAPS ADDITIONAL COST FOR 325 & 525 GAL. POLY WATER TANK	
TAN-740GAL	740 GAL. W/ STEEL FRAME (OIL FIELD TANK) Complete With Pipe Frame ** 740 US GAL.**

FUEL TANKS, GAS CAPS, & TANK BRACKET



TAN-FUEL-10G	FUEL TANK - 10 GAL.
TAN-FUEL-20G	FUEL TANK - 20 GAL.
TAN-FC 10G	GAS CAP WITHOUT GAUGE
TAN-FC 10G-WG	GAS CAP WITH GAUGE
FRAME-TANKBRACKET-10G	TANK BRACKET

SMALL POLY WATER TANKS



TAN-35GAL	35 GAL. FRAME NOT INCLUDED
TAN-100GA	100 GAL. FRAME NOT INCLUDED

STEAM OPTIONS



STEAM HOSE - 3/8"



HOS-STM100

Hose used for wet steam. Rated at 3000 PSI 325° F

HOS-STM50	3/8" X 50'
HOS-STM100	3/8" X 100'

STEAM NOZZLE



NOZ-STM14-1.5F

NOZ-STM38-1.6

For cleaning and thawing operations. Great for de-icing. For installation on steam wand WAN-STM.

NOZ-STM14-1.5F	FLAT, 1.5 MM, BRASS
NOZ-STM38-BLK	BRASS, BLANK STEAM

STEAM HOSE - 1/2"



Hose used for wet steam. Rated at 3000 PSI 325° F

HOS-STM50-12	1/2" X 50'
HOS-STM100-12	1/2" X 100'

STEAM WAND



WAN-STM

Must be used in steam application. Safety guard around wand.

GUN-STM12-38SW

GUN-STM12-38 SW	STEAM TRIGGER GUN. 0 GPM @ 1500 PSI & 350°. INLET: 1/2" FPT OUTLET: 3/8" FPT DUE TO LIABILITY WE DO NOT INSTALL ON STEAM SYSTEMS
WAN-STM38	3/8" STEAM WAND WITH EXPANDED METAL GRIP
WAN-STM12	1/2" STEAM WAND WITH EXPANDED METAL GRIP
WAN-STM34	3/4" STEAM WAND WITH EXPANDED METAL GRIP
WAN-STM1	1" STEAM WAND WITH EXPANDED METAL GRIP

STEAM OPTION KITS



DOUBLE UNLOADER

STANDARD KIT	
KIT-STMOPT-COM	STEAM OPTION FOR COMMERCIAL HOT WATER MACHINES - VARIABLE FLOW VALVE, 305°F TEMP CONTROLLER, TEMP GAUGE, PRESSURE GAUGE
STEAM OPTION KITS - DOUBLE UNLOADER TYPE	
/STM	STEAM OPTION FOR INDUSTRIAL HOT WATER MACHINES - STEAM GAUGE, 3 WAY VALVE, FLOW SWITCH, STEAM HOSE, STEAM WAND - ADD: /STM TO MODEL
DRY STEAM KIT	
KIT-STMDRY	DRY STEAM KIT (COMPATIBLE WITH ALL INDUSTRIAL HOT WATER UNITS UP TO 1,000,000 BTU) (HOSE/WAND NOT INCLUDED)
PID CONTROL OPTION FOR ALL INDUSTRIAL STEAM MODELS	
THR-PID2362	PID CONTROLLER FOR INDUSTRIAL STEAM MACHINES - HIGH/LOW FIRE ON OIL BURNER

SOAP SWITCH CONTROL PANEL



To control units with one switch. For soap in remote wash bay.

SWT-RMS	SOAP SWITCH CONTROL PANEL - BOX ONLY
---------	--------------------------------------

STAINLESS STEEL VACUUM



Stainless steel construction for commercial use with 15 acceptor and heavy duty lock box. Powered by twin 1-6 hp motors coupled with hose and claw nozzle.

CAR-VS0-CP	STAINLESS STEEL VACUUM, COIN ACCEPTOR INCLUDED
------------	--

WAND HOLDER



In bay stainless steel, keeps your gun wands up off the floor.

CAR-WH-17	17", STAINLESS STEEL
-----------	----------------------

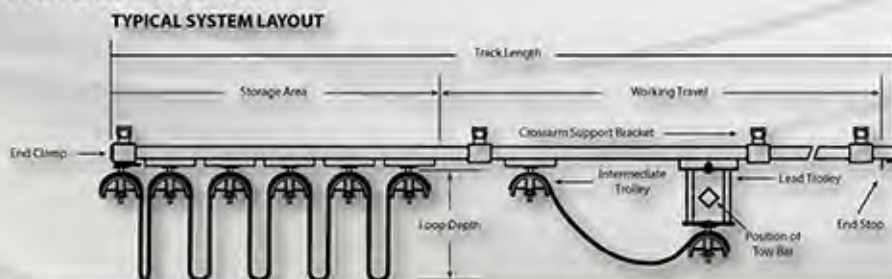
MAT CLAMPS



Allows your customers to clamp their mats to the wall so they can easily be sprayed off.

CAR-MATCA10	STAINLESS STEEL
-------------	-----------------

FESTOON SYSTEM



To hold the hose off the floor.

KIT-WBFES-T100	SYSTEM WITH 100' CABLE, WHEEL TROLLEY KIT
KIT-WBFES-T	SYSTEM WITH 100' C-TRACK, COMPLETE C/W 10 TROLRIES (FOR STAINLESS STEEL X 3.5) (FOR EACH SIDE OF WASH BAY TO HOLD THE HOSE OFF THE FLOOR)

REMOTE WASH BAY CONTROL PANEL



To control the functions of your pressure washer from the wash-bay location.

KIT-WBS3	REMOTE WASH BAY CONTROL PANEL - START-STOP/SOAP/ BURNER. LEAD WIRE NOT SUPPLIED
KIT-WBS4	4 SWITCH REMOTE WASH BAY CONTROL PANEL - MOTOR START-STOP/SOAP ON-OFF/WAX ON-OFF/BURNER ON-OFF. LEAD WIRE NOT SUPPLIED

TRUCK WASH BRUSH



A stiff bristle brush to help remove stuck on grease, mud, dirt, and grime.

ACC-TWB10	TRUCK WASH BRUSH, 2 1/2" X 10", C/W BUMPER
-----------	--

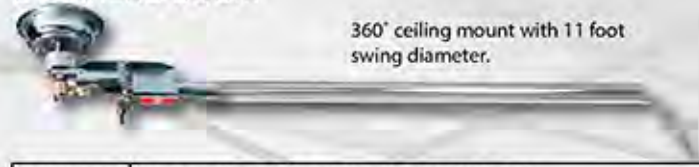
COMPLETE FOAM BRUSH ASSEMBLY



The assembly comes with a soft bristle brush, as well as a single bay chemical mixer/injector kit for your foam option.

CAR-FBR1	COMPLETE ASSEMBLY, SINGLE BAY CAR WASH
CAR-FBHH	FOAM BRUSH HANDLE HOLDER

OVERHEAD BOOM



360° ceiling mount with 11 foot swing diameter.

CAR-OBO	OVERHEAD BOOM, 360° PIVOT, 3000 PSI, 5'5"
---------	---

STAINLESS STEEL COILS



Food grade usage.

Note: These are the upgrade prices

STAINLESS STEEL COILS - OIL FIRED	
COI-EK4232-SP40	16" STAINLESS STEEL COIL & TANK ASSEMBLY, OIL FIRED (FOR PJO200, PJO350)
COI-EK4105-SP40	18" STAINLESS STEEL COIL & TANK ASSEMBLY, OIL FIRED (FOR PJO300)
COI-EK4426-SP40	18" STAINLESS STEEL COIL & TANK ASSEMBLY, OIL FIRED (FOR PJO400)
COI-EK4122-SP40	20" STAINLESS STEEL COIL & TANK ASSEMBLY, OIL FIRED (FOR PJO440)
COI-EK4465-SP40	20" STAINLESS STEEL COIL & TANK ASSEMBLY, OIL FIRED, (FOR PJO600, PJO700, PJO800, 1/2")
COI-EK4128-SP80	24" STAINLESS STEEL COIL & TANK ASSEMBLY, OIL FIRED (FOR PJO700, PJO900 3/4")
COI-EK4455-SP80	24" STAINLESS STEEL COIL & TANK ASSEMBLY, OIL FIRED (FOR PJO1000)
COI-EK4132-SP40	30" STAINLESS STEEL COIL & TANK ASSEMBLY, OIL FIRED (FOR PJO1200)
COI-EK9600-SP80	30" STAINLESS STEEL COIL & TANK ASSEMBLY, OIL FIRED (FOR PJO1800)
COI-EK9814-SP80	55" STAINLESS STEEL COIL & TANK ASSEMBLY, OIL FIRED (FOR PJO2000)

STAINLESS STEEL COILS - GAS FIRED	
COI-EK4232-SP40	16" STAINLESS STEEL COIL & TANK ASSEMBLY, GAS FIRED 195,000 BTU
COI-EK4117-SP40	18" STAINLESS STEEL COIL & TANK ASSEMBLY, GAS FIRED, 295,000 BTU
COI-EK4118-SP40	20" STAINLESS STEEL COIL & TANK ASSEMBLY, GAS FIRED, 395,000 BTU
COI-EK4109-SP80	24" STAINLESS STEEL COIL & TANK ASSEMBLY, GAS FIRED, 510,000 / 600,000 / 720,000 BTU
COI-EK4132-SP80	30" STAINLESS STEEL COIL & TANK ASSEMBLY, GAS FIRED, 940,000 BTU

CERTIFIED CRN COILS - OIL OR GAS FIRED	
CRN COILS	COIL WITH CANADIAN REGISTERED NUMBER - 1/2" COILS
CRN COILS	COIL WITH CANADIAN REGISTERED NUMBER - 3/4 AND 1" COILS

HOT WATER PUMP



High temperature pump. Rated @ 185° F. Nickel plated, forged brass manifold, run-dry seals.

EMPEROR PUMP UPGRADE	
PMP-G0915HTC	2 HP EMPEROR PUMP UPGRADE - UP TO 180° F WATER, 2.1 GPM, 2500 PSI, 1750 RPM

GENERAL PUMP



For all cold or hot water units with 2 HP electric or 6.5 gas motors.

GENERAL PUMP UPGRADE	
PMP-G0915E17ET-UPGRADE	PUMP UPGRADE FOR COLD WATER 2 HP UNIT TO GENERAL PUMP
PMP-G0815E6ET-UPGRADE	PUMP UPGRADE FOR COLD WATER 6.5 HP UNIT TO GENERAL PUMP

PUMP KITS



PowerJet unloader valve assembly with chemical injector.

PRK-PJ-33-61	REPAIR KIT, UNLOADER ASSEMBLY, PJ PUMPS
PRK-PJ-21-28	PACKING KIT, PJ3435H, PJ440, PJ215 FOR PJ PUMP
PRK-PJ-64-65	VALVE KIT, PJ3435H, PJ440, PJ215 FOR PJ PUMP
PRK-G001	VALVE KIT FOR GENERAL PUMP
PRK-G028	PACKING KIT WITH BRASS FOR GENERAL PUMP
PRK-G069	PACKING KIT WITHOUT BRASS FOR GENERAL PUMP
PRK-G123	VALVE KIT FOR GENERAL PUMP
PRK-G156	PACKING KIT FOR GENERAL PUMP

HOT WATER PACKING VALVE KIT GENERAL PUMP



Allows you to run hot water through your pump up to 185° F
Note: On new machines higher temp TPI will be required.

PRK-G209	(TSF SERIES EXCEPT 2421)
PRK-G211	TSF2421 ONLY
PRK-G220	HOT WATER PACKING KIT / VALVE KIT

VOLT METER



To confirm voltage in 12 volt systems.

CON-VOLT-MTR	FOR 12 VOLT SYSTEMS
--------------	---------------------

HOUR METER



Add to pressure washer to easily track maintenance intervals.

CON-HOURMETER-12/24	12/24 HOUR METER
CON-HOURMETER-120	120 HOUR METER

OUTLET TEMPERATURE GAUGE



For metering boiler outlet temperature.

THR-T3X4B500	INLINE OUTLET TEMPERATURE GAUGE - 3" - 0° to 500°F
--------------	--

PRESSURE GAUGE



Shows operating PSI of machine, great for applications where PSI is changing frequently from job to job.

THR-PG1000	PRESSURE GAUGE 1000/2000/3000 PSI
THR-PG2000	PRESSURE GAUGE 2000 PSI
THR-PG3000	PRESSURE GAUGE 3000 PSI
THR-PG5000	PRESSURE GAUGE 5000 PSI
THR-PG6000	PRESSURE GAUGE 6000 PSI
THR-PG10000	PRESSURE GAUGE 10,000 PSI
THR-PG20000	PRESSURE GAUGE 20,000 PSI
SPECIFY APPROX. 60% OF OPERATING PRESSURE	
EXTRA CHARGE FOR MOUNTING	

MISCELLANEOUS ITEMS



INLINE FILTERS



Keeps debris from damaging pump.

FIL-CBF12-80	INLINE FILTER, CLEAR, 1/2" 80 MESH
FIL-CBF34-80	INLINE FILTER, CLEAR, 3/4" 80 MESH
FIL-CBF1-80	INLINE FILTER, CLEAR, 1" 80 MESH
FIL-CBF114-80	INLINE FILTER, CLEAR, 1-1/4" 80 MESH
FIL-CBF112-80	INLINE FILTER, CLEAR, 1-1/2" 80 MESH
FIL-GCF12	GREEN CAP INLINE FILTER, 1/2" FPT INLET/MPT OUTLET, TWO 1/4" SIDE PORTS, 6 GPM MAX FLOW 145 PSI MAX PRESSURE

GENERATORS



For pressure washers to run the 120 volt burners. Replacement for built on generators.

GEN-MC3000	GENERATOR - 4000 WATT - (ENGINE DRIVEN OIL FIRED UNITS) EXCHANGE FOR 2000 WATT, REDUCES MACHINE PERFORMANCE
GEN-WIN4000	GENERATOR - 4000 WATT - (ENGINE DRIVEN OIL FIRED UNITS) UPGRADE
PLEASE SPECIFY MODEL OF YOUR MACHINE WHEN ORDERING	

UNLOADER - FLOW ACTIVATED



Flow Activated instead of Pressure activated (easier on piped in systems).

UNL-FA1130-K7	6.6-10.8 GPM @ 3500 PSI. 165°F . 3/8 BSP-F. 3/8 BSP-F. 3/8 BSP-M
UNL-FA1358-K9	2.5-13.2 GPM @ 5800 PSI. 165°F . 1/2" BSP-F OUTLET. 1/2" BSP-M OUTLET. 3/4" BSP-M/1/2" BSP-F BYPASS

ELECTRIC CLUTCH



Work with hydraulic motor on boats to run the pump.

PMP-DGC-12-WP12	ELECTRIC CLUTCH (BELT/GASOLINE DRIVEN - OIL FIRED UNITS) UP TO 24HP
PMP-DGC12-WP7	DOUBLE GROOVE CLUTCH ADAPTER KIT C/W 7" PULLEY, 12 VOLT, FOR GENERAL PUMPS 47, ES & ESN SERIES PUMPS

SUCTION KIT



Allows you to pick up water from lake, bay, ocean, and wash out on your aquaculture site. For industrial cold water gas units.

KIT-SUCTION	SUCTION KIT - 6' 3/4" HOSE - INLINE WATER FILTER - FOOT VALVE - PRIMER VALVE (COLD WATER GAS DRIVEN)
-------------	--

ELECTRIC START UPGRADE KITS - COLD WATER



Only on commercial gas units with same size engine. Turns your pull start (recoil) unit into an electric start.

ELECTRIC START UPGRADE KIT	
KOH-CH440-ES	GAS ENGINE, KOHLER, 14 HP, ELECTRIC START UPGRADE (COLD WATER GAS UNITS)
HON-GX390E	GAS ENGINE, HONDA, 13 HP, ELECTRIC START UPGRADE (COLD WATER GAS UNITS)

HYDROSTATIC VALVE AND ASSEMBLY KIT

For pressure testing lines with your pressure washer.

KIT-HDT	HYDROSTATIC VALVE AND ASSEMBLY KIT (FACTORY INSTALL)
---------	--

REMOTE SWITCH - ELECTRIC DRIVEN ONLY



To control functions on pressure washers with electrical or mechanical controls.

SWT-RMS	REMOTE SWITCH C/W 50' OF CORD - ELECTRIC DRIVEN ONLY
---------	--

FITTINGS



Steel

FIT-S1003-B	HEX COUPLING, 1/4", FNPT
FIT-S1022-C	HEX NIPPLE, 3/8", (WMM0003GS)
FIT-S1022-CB	HEX NIPPLE, REDUCING, 3/8" X 1/4", (WMM0302GS)
FIT-S1022-D	HEX NIPPLE, 1/2", (WMM0004GS)
FIT-S1022-DB	HEX NIPPLE, REDUCING, 1/2" X 1/4", (RCF0402SS)
FIT-S1022-DC	HEX NIPPLE, REDUCING, 1/2" X 3/8", (WMM0403GS)
FIT-S1022-EC	HEX NIPPLE, REDUCING, 3/4" X 3/8"

PRIMARY CONTROL



Safety drive that turns off burner to prevent flooding.

OIL-7556A0000U	12V
OIL-7575A0000U	120V
OIL-7580A0000-U	230V
OIL-52082U	BECKETT GENESIS BURNER CONTRACTOR PRIMARY CONTROL DIAGNOSTIC TOOL

FUEL FILTERS



FIL-FF14	FUEL FILTER ASSEMBLY, 1/4" (HO87099420)
FIL-FF14-AL	FUEL FILTER ASSEMBLY, 1/4", ALUMINUM
FIL-FFWS-CMP	FUEL FILTER/ WATER SEPARATOR, COMPLETE UNIT(87497700)(HO87497710)
FIL-FFWS-E	ELEMENT, FUEL FILTER/ WATER SEPARATOR(87497710) (HO87253070) (HO87497700)

12 VOLT BURNER - PRIMARY CONTROL



A 12 VDC primary safety control for oil burners used on pressure washers. It can provide interrupted or intermittent duty ignition, and it has a 15 second lockout time.

KIT-BNR12-MSR-UPGRADE	12 VOLT BURNER PRIMARY CONTROL
-----------------------	--------------------------------

SPARK ARRESTOR

Reduces any sparks from engines.

KIT-ESA	ENGINE SPARK ARRESTOR FOR MINING OR OILFIELD APPLICATIONS
---------	---

COMPLETE MILLIVOLT KIT FOR PROPANE GAS UNITS

Option for older propane with millivolt controls.

PRO-KIT-LP400MV	COMPLETE MILLIVOLT KIT FOR PROPANE GAS UNIT, 400,000 BTU
-----------------	--

BATTERY



CON-BATT-12V	12V BATTERY COMMERCIAL SERIES
CON-BATT-12V-HD	12V HEAVY DUTY BATTERY

DIESEL ENGINE SHUTDOWN SYSTEM

KIT-DESD	DIESEL ENGINE SHUTDOWN SYSTEM (USED IN MINES, REFINERIES ETC)
----------	---

BURNER PARTS



OIL-2.00X80B	OIL BURNER NOZZLE, 2.00X80B(HO900771)
OIL-31812-12	IGNITER KIT W/O TIMER, 12V, MSR. WAYNE - 802829352076(HO91075070)

MISCELLANEOUS ITEMS



THERMAL RELIEF VALVES



UNL-TRV38	3/8" (100557)(HO921421)
UNL-TRV12	1/2" (100558)(HO921422)
UNL-TRV12-HT	1/2", HIGH TEMPERATURE, 190°F

DELAY TIMER



Solid state timer delay on break timing module. Use on auto STOP/START systems.

ELS-TSB222	SOLID STATE TIMER
------------	-------------------

THERMOSTAT



THR-EK220	THERMOSTAT, 220°F, 7000 PSI 802829352311 (HO87500950) (HO955940)
THR-EK302	THERMOSTAT, 302°F, 7000 PSI
THR-BC200C	TEMPERATURE CONTROLLER, 200°F, BOX STYLE, 90-240 VAC INPUT, 5AMP/240 VAC OUTPUT

HIGH LIMITS

THR-HL12WL-230	HIGH LIMIT SWITCH, C/W WIRE LEAD, 1/2", 230°F
THR-HL12WL-330	HIGH LIMIT SWITCH, C/W WIRE LEAD, 1/2", 330°F
THR-HL12WL-375SS	HIGH LIMIT SWITCH, C/W WIRE LEAD, 1/2", 375°F, STAINLESS STEEL

PRESSURE SWITCH



Use primarily for the burner system to ignite the burner, also used in Auto Start Systems.

SWT-PSW14	4000 PSI, 1/4" MNPT
SWT-PSW38SS	3/8", STAINLESS STEEL, 8700 PSI, 195°F

BRASS FLOW SWITCH



Designed to operate in response to low volume, low pressure flow, and still allow for high pump output flow. Provides reliable ON/OFF for STOP/START systems.

SWT-FS329	0.75 - 16 GPM @ 5000 PSI MAX, 3/8", 165°F MAX TEMP
SWT-FS975	REEDLESS, 12 GPM @ 5000 PSI MAX, 3/8", 180°F MAX TEMP (100975)
SWT-FSI	01-8 GPM @ 4350 PSI MAX, 3/8", 165°F MAX TEMP

FLOW SWITCH



Designed to provide control on solenoids, timers, indicator lights on cold & hot water systems.

SWT-FSS0SST	FLOW SWITCH, 1 - 7.8 GPM @ 8700 PSI MAX, 3/8 INCH, S/STEEL, 180°F
-------------	---

A		F	
A-FRAME HOSE REEL - INDUSTRIAL	9	FESTOON SYSTEM	27
ACID PUMP	11	FIREHOUSE DISPLAY BASE	14
B		FITTINGS	6,31
BALL VALVES	10	FLEX WANDS & PUSH PULL LANCE	6
BARRACUDA ROTARY NOZZLE	3	FLOAT TANK	25
BATTERY	31	FLOW SWITCH	32
BOOM	27	FOAM BRUSH ASSEMBLY	27
BRASS FLOW SWITCH	32	FOAM CANNONS	5
BRUSH - TRUCK WASH	27	FOAM FILLED TIRES	17
BURNER (12 VOLT) - PRIMARY CONTROL	31	FUEL FILTERS	31
BURNER PARTS	31	FUEL TANK OPTION	25
BURNER SAFETY SWITCH & EXHAUST VENT	21	FUEL TANKS, GAS CAPS, & TANK BRACKET	25
C		G	
CASTER WHEEL	14	GENERAL PUMP	29
CHEMICAL CONTROL & INJECTION KITS	11	GENERATORS	30
CHEMICAL HOSE	8	GIANT ROTARY NOZZLES	3
CHEMICAL MIXER	11	GREASEABLE SUPER SWIVELS	10
CHEMICAL SPRAYER	11	GROUND-FAULT CIRCUIT INTERRUPTERS	13
COILS	28	GUN & WAND ASSEMBLIES	5-6
COLD WATER CART	14	GUTTER CLEANER	6
COLD WATER - FLAT BASE FRAME	14	H	
COLD WATER - FRAME OPTIONS & WHEEL KITS	14	HARNESSES	6
COLD WATER - LEG FRAME	14	HEAVY DUTY AUTO STOP/START WITH SHUTDOWN TIMER	13
COMMERCIAL & INDUSTRIAL GAS & DIESEL DRIVEN		HIGH LOW GAS VALVES WITH DUAL TEMPERATURE CONTROLS	12
- OIL FIRED FRAME OPTIONS & WHEEL KITS	17	HIGH VOLUME FOAMER	11
COMMERCIAL ROLL CAGE FRAME (ALUMINUM & STAINLESS)	17	HOSE	7
COMPLETE MILLIVOLT KIT	31	HOSE REELS	9-10
CRN COILS	28	HOSE REEL - ROLLER BRACKET GUIDE	10
CUSTOM ORDER HOSES	8	HOSE REEL STANDS	10
D		HOSE REEL TROLLEY KITS	10,24
DELAY TIMER	32	HOT PACK	24
DEMA INLINE HIGH PRESSURE CHEMICAL INJECTOR	11	HOT WATER PACKING KIT GENERAL PUMP	29
DIESEL ENGINE SHUTDOWN SYSTEM	31	HOUR METER	29
DRAFT HOOD	12	HYDRAULIC HOSE REEL	10
DRAFT INDUCER	12	HYDRO EXCAVATION NOZZLE	6,26
DRY STEAM GENERATORS - FRAME OPTIONS & WHEEL KITS	18	HYDROSTATIC VALVE & ASSEMBLY KIT	30
DRY STEAM SKID - HORIZONTAL	18	I	
DRY STEAM SKID - VERTICAL	18	INDUSTRIAL HOT WATER DIESEL 325G SUPERSKID	20
DRY STEAM WHEEL SKID - HORIZONTAL	18	INDUSTRIAL HOT WATER DIESEL 525G SUPERSKID	20
DRY STEAM WHEEL SKID - VERTICAL	18	INDUSTRIAL HOT WATER DIESEL 740G SUPERSKID	20
DUAL LANCE WANDS	6	INDUSTRIAL HOT WATER ELECTRIC DRIVE - FRAME OPTIONS & WHEEL KITS	15
E		INDUSTRIAL HOT WATER ELECTRICALLY HEATED	
ELECTRICALLY HEATED TIMER	13	- FRAME OPTIONS & WHEEL KITS	16
ELECTRIC CLUTCH	30	INDUSTRIAL HOT WATER GAS 225G SUPERSKID	19
ELECTRIC MOTOR CONTROLS	13	INDUSTRIAL HOT WATER GAS 325G SUPERSKID	19
ELECTRIC MOTOR (50HZ)	13	INDUSTRIAL HOT WATER GAS 525G SUPERSKID	19
ELECTRIC START UPGRADE KITS - COLD WATER	30	INDUSTRIAL HOT WATER GASOLINE BOLT ON TRAILER PACKAGE	22
EMERGENCY SHUT-OFF	13	INLINE FILTERS	30
EMPEROR PUMP	29		
ENCLOSED TRAILER PACKAGES	21		
EXPLOSION PROOF PACKAGES	13		
EXTENSION WANDS	6		

INDEX



J		S	
JETTER ACCESSORIES	23-24	SEWER/CULVERT NOZZLES	3,23
JETTER BOX	23	SKID & TANK FRAMES	19-20
JETTER FOOT PEDAL INLINE	23	SOAP SWITCH CONTROL PANEL	27
JETTER HOSES	24	SOLENOID CONTROL	11
JETTER NOZZLE KITS	23	SPARK ARRESTOR	31
JOINER HOSES	7,9,24	SPRING DRIVEN HOSE REEL	9
L		STAINLESS STEEL COILS - GAS FIRED	28
LIGHT KIT	20	STAINLESS STEEL COILS - OIL FIRED	28
LOW PRESSURE HOSE - 3/4"	8	STANDARD HOSE	7
M		STEAM HOSES	8,26
MANUAL HOSE REEL - STAINLESS STEEL	9	STEAM NOZZLES	6
MAT CLAMPS	27	STEAM NOZZLE	26
MEGA-FLEX DRAIN CLEANING KIT	8	STEAM OPTIONS	6
MEG NOZZLE	3	STEAM WAND	26
N		SUCTION KIT	30
NEMA BOX	13	SUPER SWIVELS	10
NON-MARKING HOSE	8	SURFACE CLEANER	6
NOZZLES & WAND ACCESSORIES	3-4	SWIVEL	8
O		T	
O-RINGS	6	TANKS	25
OPEN TRAILER PACKAGE	22	THERMOSTAT	32
OUTLET TEMPERATURE GAUGE	29	THERMAL RELIEF VALVES	32
P		TIRES	17
PICKUP SKID BOLT ON TRAILER PACKAGE	22	TRIGGER GUNS	6
PIT BOSS	6	U	
PIVOTING HOSE GUARD	10	U-FRAME HOSE REEL	9
PIVOT HOSE REEL	9	UNDERCARRIAGE CLEANER	6
POLY WATER TANKS	25	UNLOADER - FLOW ACTIVATED	30
POWER DRAFT DAMPERS	12	V	
POWER VENTER	29	VFD FOR ELECTRIC MOTOR CONTROLS	13
PRESSURE GAUGE	12	VACUUM	27
PRESSURE SWITCH	32	VOLT METER	29
PRIMARY CONTROL	31	W	
PUMP FRAME - COLD WATER	14	WALL MOUNT FOR DIRECT DRIVE	14
PUMP KITS	29	WAND ACCESSORIES	4
Q		WAND HOLDER	27
QUICK COUPLERS	6	WANDS	6
QUICK COUPLER NOZZLES	3	WASH BAY ACCESSORIES	27
R		WASH BAY CONTROL PANEL	27
RAIN CAP	12,15,17,22	WATER BROOM	6
RENTAL ROLL CAGE	17	WATER TANKS	25
REMOTE SWITCH - ELECTRIC DRIVEN ONLY	30	WET SANDBLAST KIT	6
ROLL CAGES (STAINLESS STEEL COLD WATER)	14	WHEELS	14,15,16,17
ROTARY NOZZLE - COMMERCIAL DUTY	3	WINTERIZATION KIT	25
ROTARY NOZZLES - HEAVY DUTY	3		
ROTARY SEWER/CULVERT NOZZLES	3,23		
ROTARY TIP FILTER	3		

PowerJet

PRESSURE CLEANING SYSTEMS



SEE IT IN ACTION ON
 YouTube

VISIT OUR YOUTUBE CHANNEL TO
CHECK OUT CUSTOMER TESTIMONIALS,
LEARN MORE ABOUT POWERJET
EQUIPMENT, AND SEE IT IN ACTION



DISTRIBUTOR TESTIMONIAL

"PowerJet builds quality pressure washers that are designed to be service friendly while also maintaining a very competitive price point. We love the endless options available and the attention to detail that goes into their machines. Chem-X is very proud to partner up with PowerJet and offer such a great line of pressure washers to our customers."

- Bob Hoyle, Owner at Chem-X
Agawam, Massachusetts